

2019 Land Budget Overview Expenditure Review

Platte River Recovery Implementation Program

For More Information Contact: Jason Farnsworth, farnsworthj@headwaterscorp.com (308) 237-5728

2019 Land Budget Overview By Budget Line Item

Budget Line Item	Description	Estimated Expenditure****	Actual Expenditure
LP-2	Adaptive Management Species Habitat Actions*	\$2,168,452	\$128,885
LP-3	New Land Acquisitions	\$2,600,000	\$2,703,402
LP-4	Property Maintenance & Agricultural Operations**	\$195,200	\$145,739
LP-6	Land Plan Special Advisors	\$20,000	\$13,136
LP-7	Public Access Management	\$50,000	\$40,840
WP-4 (j)	Property Maintenance for Water Properties***	\$62,000	\$61,672

* Includes \$50,000 in LP-2 for new acquisitions in 2019.

** Includes \$50,000 in LP-4 for new acquisitions in 2019.

*** Includes \$15,000 in WP-4 (j) for new acquisitions in 2019.

**** The budget items have been reviewed and approved by the LAC on October 29, 2018.

2019 Budget Overview By Complex

Complex	Estimated Expenditure	Actual Expenditure	Estimated Income	Actual Income
Non-Complex Tracts	\$52,375	\$24,179	\$53,900	\$45,447
Plum Creek "Complex"	\$48,360	\$32,141	\$6,050	\$6,965
Cottonwood Ranch Complex	\$72,470	\$46,665	\$4,500	\$6,107
Elm Creek Complex	\$54,560	\$59,199	\$14,850	\$15,950
Pawnee Complex	\$40,800	\$8,868	\$5,190	\$3,132
Fort Kearny Complex	\$69,017	\$52,520	\$36,900	\$31,134
Minden-Gibbon Complex	\$20,295	\$0	\$0	\$0
Clark Island Complex	\$1,856,000	\$11,043	\$30,270	\$36,360
Shoemaker Island Complex	\$49,775	\$40,009	\$47,035	\$35,396
Water Properties	\$47,000	\$61,672	\$5,760	\$30,318
Total	\$2,310,652	\$336,296	\$204,455	\$210,809

2019 Budget Priority Areas by Budget Line Item

LP-2 – Adaptive Management Species Habitat Actions: Species habitat priorities for 2019 are focused on creation and maintenance of suitable complex and non-complex habitat for Program target species.

LP-3 – New Land Acquisitions: 2019 land acquisition priorities include identification and acquisition of lands for construction of an additional 60 acres of off-channel sand and water habitat for the least tern and piping plover and identification and acquisition of lands that could count towards the First Increment Extension habitat land "plus up" of 1,500 acres.

LP-4 – Property Maintenance & Agricultural Operations: 2019 priorities include maintenance of basic land infrastructure such as facilities, roads, and fences as well as fulfilling basic ownership obligations like noxious weed control and ROW mowing.

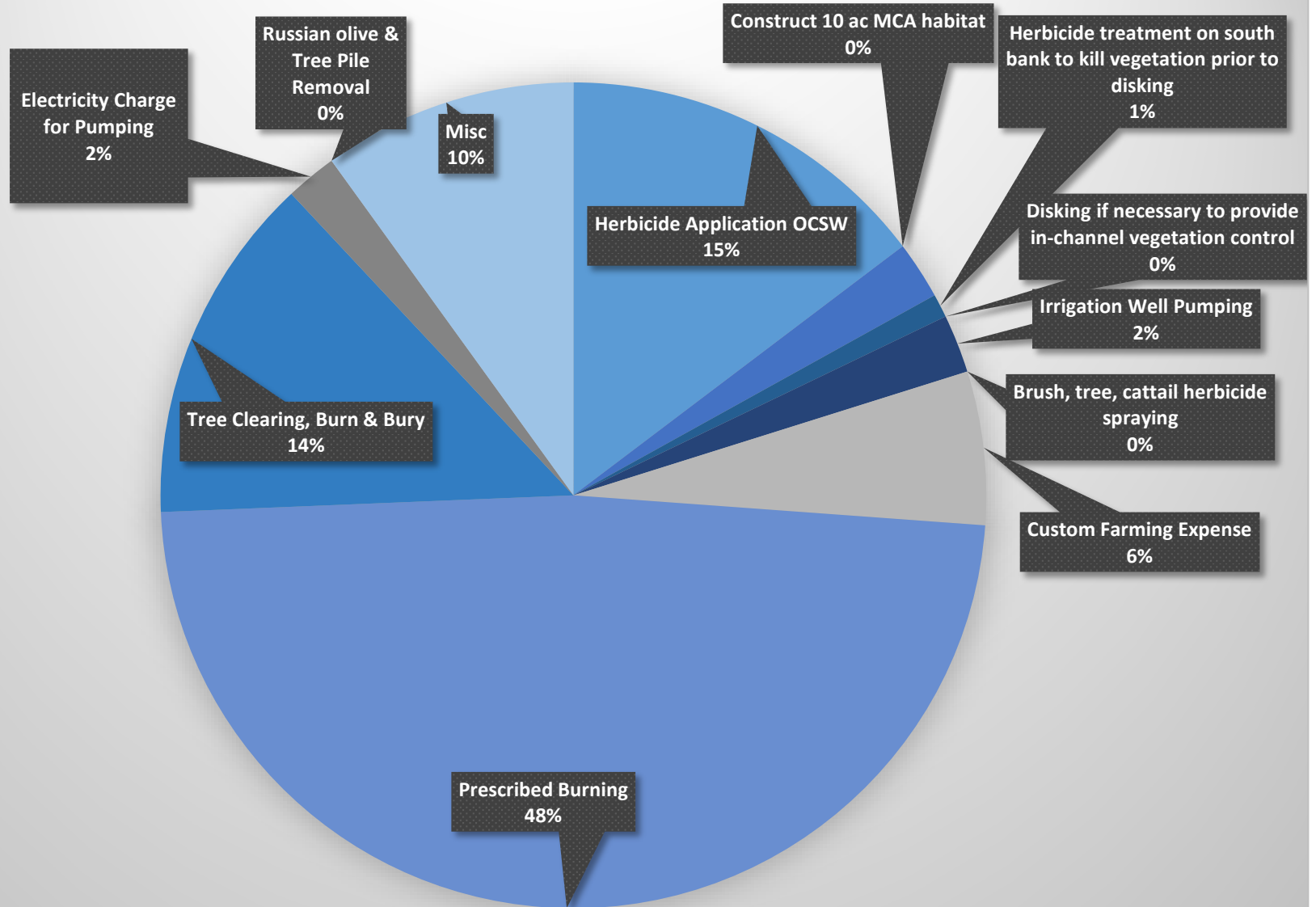
LP-6 – Land Plan Special Advisors: Priorities for special advisors include administration of agricultural leases and associated FSA obligations, crop management and marketing, and assistance in cropland conversions.

LP-7 – Public Access Management: Nebraska Game and Parks Commission will manage public access to Program lands in 2019.

WP-4 (j) – Property Maintenance for Water Properties: 2019 priorities include maintenance of basic land infrastructure such as facilities, roads, and fences as well as fulfilling basic ownership obligations like noxious weed control and ROW mowing.

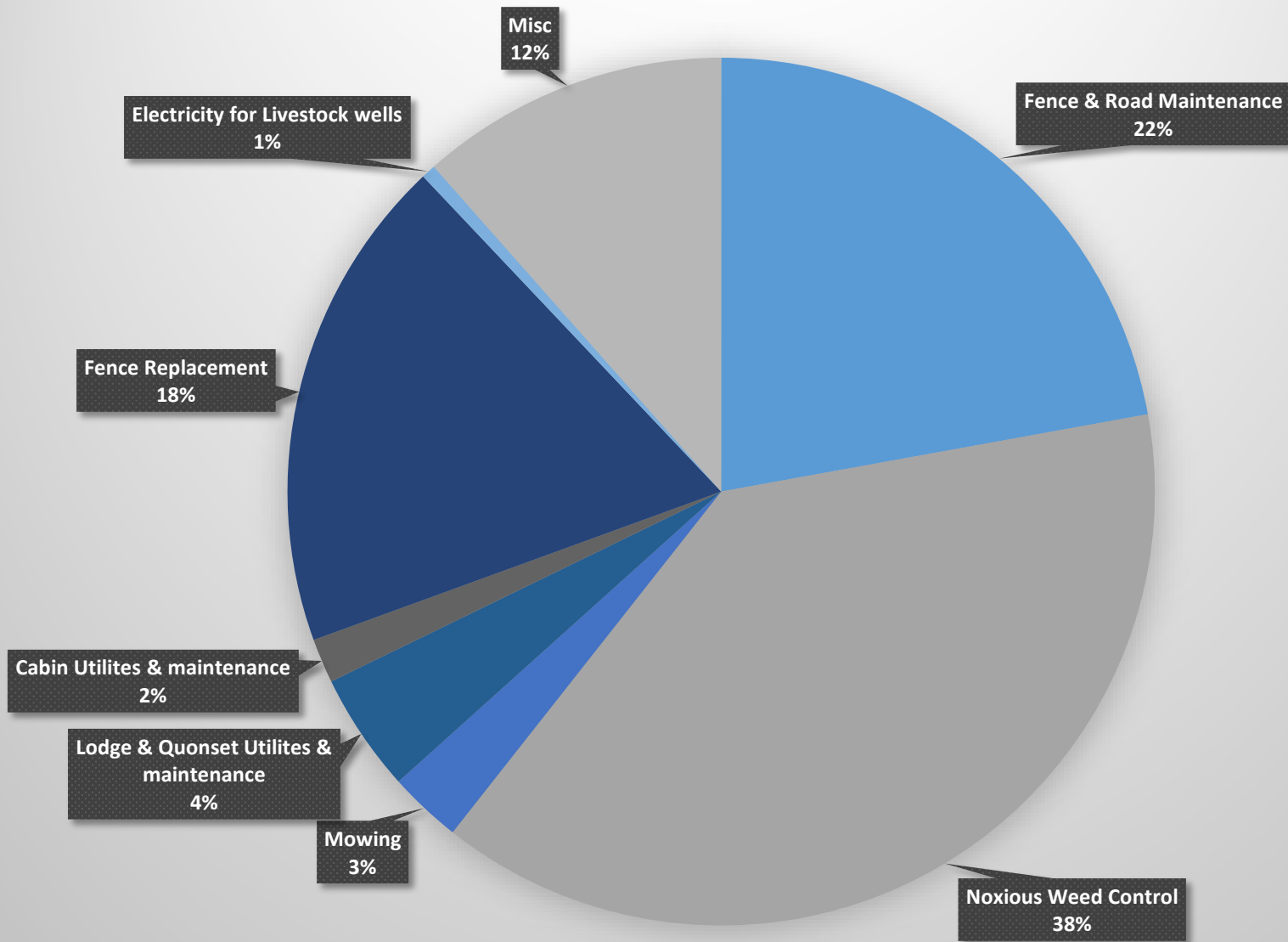
LP-2	Priority Area: <i>Species Habitat</i>		2019 Expenditures	
			Estimated	Actual
	Item(s): Maintain Suitable In- and Off-Channel Sand & Water Habitat			
		Herbicide Application OCSW	\$18,910	\$18,935
		Construct 10 ac MCA habitat	\$15,330	\$0
		Misc		\$2,909
	Item(s): Improve Target Species Sand and Water Habitat			
		Herbicide treatment on south bank to kill	\$2,000	\$1,188
		Disking if necessary to provide in-channel	\$164,570	\$0
		Misc		\$0
	Item(s): Maintain Suitable Palustrine Wetland Habitat			
		Irrigation Well Pumping	\$2,235	\$2,942
		Brush, tree, cattail herbicide spraying	\$3,300	\$0
		Custom Farming Expense	\$16,500	\$7,741
		Misc		
	Item(s): Whooping Crane Grassland / Wet Meadow Habitat			
		Prescribed Burning	\$68,207	\$62,116
		Tree Clearing, Burn & Bury	\$7,000	\$17,625
		Electricity Charge for Pumping	\$5,400	\$2,588
		Russian olive & Tree Pile Removal	\$15,000	\$0
		Misc		\$12,841
			\$318,452	\$128,885
	Priority Area: Adaptive Management			
	Item(s): Off-Channel Tern and Plover Nesting Habitat			
		Construction of OCSW habitat	\$1,800,000	\$0
		Total	\$2,118,452	\$128,885
		2019 New Acquisitions	\$50,000	\$0
		Budget Total	\$2,168,452	\$128,885

FY 2019 LP-2 Expenditures



LP-4	Priority Area: Operations and Maintenance		2019 Expenditures	
			Estimated	Actual
	Item(s): <i>Basic Property Maintenance Obligations and Needs</i>			
		Fence & Road Maintenance	\$24,000	\$32,277
		Noxious Weed Control	\$73,000	\$56,079
		Mowing	\$9,500	\$3,971
		Lodge & Quonset Utilites & maintenance	\$5,600	\$6,471
		Cabin Utilites & maintenance	\$2,000	\$2,410
		Fence Replacement	\$30,500	\$26,954
		Electricity for Livestock wells	\$600	\$779
		Misc		\$16,798
		Total	\$145,200	\$145,739
		2019 New Acquisitions	\$50,000	\$0
		Budget Total	\$195,200	\$145,739

FY2019 LP-4 Expenditures



2019 Non-Complex Properties Annual Work Plan Report

Platte River Recovery Implementation Program

For More Information Contact: Jason Farnsworth, farnsworthj@headwaterscorp.com (308) 237-5728

General Priorities

- * **Good Neighbor Policy** - *Conduct all actions in accordance with Program's good neighbor policy.*

Adaptive Management Priorities

- * **Species Monitoring** – Monitor whooping crane use of non-complex palustrine wetlands and least tern and piping plover use and productivity at off-channel sand and water nesting sites.

Species Habitat Priorities

- * **Maintain Suitable Off-Channel Sand and Water Nesting Habitat** – Apply pre-emergent herbicide on Tracts 2009008, 2010002, 2011001, and 2011002 OCSW nesting habitat to prevent vegetation encroachment into nesting areas.
- * **Maintain Suitable Palustrine Wetland Roosting Habitat** – Manage vegetation height in the palustrine wetland areas of Tracts 2012004 and 2013001 to maintain suitable unobstructed view widths for whooping crane roosting.
- * **Protecting Other Species of Concern** – Identify presence of and determine methods to protect other species of concern during implementation of land-related activities.

Operations and Maintenance Priorities

- * **Basic Property Maintenance Obligations and Needs** – Fulfill basic property ownership obligations and needs including boundary fence signage, road maintenance, and noxious weed control.
- * **Agricultural Operations** – Oversight of crop leases on Tracts 2009008, 2012004 and 2013001 and hay lease on Tract 2011001.
- * **Sand and Gravel Mining Operations** – *Monitor sand and gravel mining operations on Tracts 2009008 and 2011002.*

NOTE: The budget section of this work plan only contains information for work items that are specific to these tracts. As such, tract-specific research and monitoring actions are presented but system-scale actions like target species and geomorphology/vegetation monitoring are not.

Priority Area: *General***Item(s):** *Land Interest and Tract-Level Restoration and Maintenance Planning*

No.	Management Activities	Budget Line Item	Completed	Cost (Estimated)	Actual Cost
NC 1	Coordination of Program land actions with neighboring landowners	N/A	Yes	N/A	N/A

Priority Area: *Species Habitat***Item(s):** *Maintain Suitable In- and Off-Channel Sand & Water Habitat*

No.	Management Activities	Budget Line Item	Completed	Cost (Estimated)	Actual Cost
NC 2	Herbicide applications on OCSW peninsulas to maintain bare sand nesting habitat	LP-2	Yes	\$10,510	\$11,842
NC 3	Construct 10 acres of on-channel LT/PP MCA habitat	LP-2	No	\$15,330	\$0

Priority Area: *Species Habitat***Item(s):** *Maintain Suitable Palustrine Wetland Habitat*

No.	Management Activities	Budget Line Item	Completed	Cost (Estimated)	Actual Cost
NC 4	Irrigation well pumping to augment water level in wetland area of Tract 2013001	LP-2	No	\$2,235	\$2,942
NC 5	Brush, tree, cattail herbicide spraying	LP-2	No	\$3,300	\$0
NC 6	Tract 2013001 Custom Farming Expenses	LP-2	No	\$16,500	\$7,741

Priority Area: *Species Habitat***Item(s):** *Other Species of Concern*

No.	Management Activities	Budget Line Item	Completed	Cost (Estimated)	Actual Cost
NC 7	Habitat and species surveys on properties where work will occur	N/A	Yes	N/A	N/A
NC 8	Coordination with USFWS and NGPC to identify and mitigate potential impacts associated with land activities	N/A	Yes	N/A	N/A

Priority Area: Operations and Maintenance**Item(s):** *Basic Property Maintenance Obligations and Needs*

No.	Management Activities	Budget Line Item	Completed	Cost (Estimated)	Actual Cost
NC 9	Fence and road maintenance	LP-4	No	\$1,500	\$0
NC 10	Noxious weed control	LP-4	Yes	\$2,000	\$453
NC 11	Mowing	LP-4	No	\$1,000	\$0

Priority Area: Operations and Maintenance**Item(s):** *Agricultural Operations*

No.	Management Activities	Budget Line Item	Completed	Cost (Estimated)	Actual Cost
NC 12	Oversight of grazing and cropland	N/A	Yes	N/A	N/A
NC 13	Oversight of sand and gravel mining	N/A	Yes	N/A	N/A

Priority Area: *Unplanned Expenses*

2012004	Electricity	Maintain Suitable	LP-4	\$1,201
---------	-------------	-------------------	------	---------

Property Identification Key:

2009008 - PRRIP Broadfoot Newark Tract
2010002 - Broadfoot Kearney South Tract
2011001 - PRRIP East Leaman Tract
2011002 - PRRIP Follmer Alda Tract
2012004 - PRRIP DeBore Tract
2013001 - PRRIP Liehs Tract

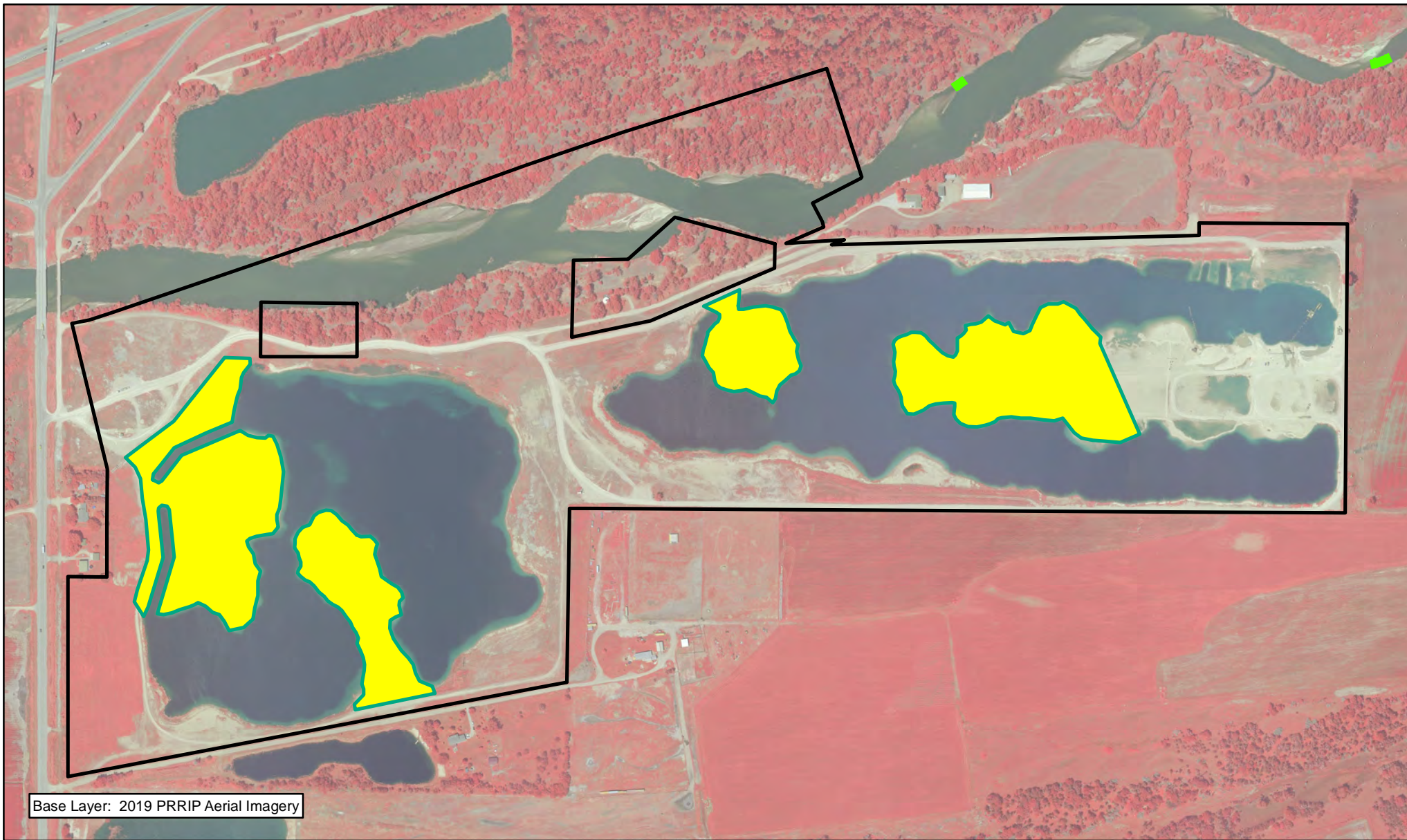
2019 Non-Complex Tracts Budget Summary

2019 Expenditures by Program Budget Line Item

Priority Area	Item	Budget Line Item	Estimated Expenditure	2019 Expenditure
Species Habitat	Create & Maintain Off-Channel Sand & Water Habitat	LP-2	\$10,510	\$11,842
Species Habitat	Create In-channel Sand & Water Habitat	LP-2	\$15,330	\$0
Species Habitat	Create & Maintain Palustrine Wetland Habitat	LP-2	\$22,035	\$10,683
Subtotal			\$47,875	\$22,525
Operations and Maintenance	Property Maintenance and Agricultural Operations	LP-4	\$4,500	\$1,654
Total			\$52,375	\$24,179

2019 Revenues




Tract	Item	Estimated Income	2019 Income
Tract 2009008	Sand & Gravel Royalties	\$13,000	\$15,433
Tract 2009008	Hay Income	\$400	\$799
Tract 2011001	Hay Income	\$1,000	\$1,582
Tract 2011002	Sand & Gravel Royalties	\$5,000	\$5,953
Tract 2011002	Cropland Cash Rent Income	\$4,000	\$3,060
Tract 2012004	Cropland Cash Rent Income	\$3,000	\$3,000
Tract 2012004	Grazing Income	\$2,000	\$0
Tract 2013001	Cropland Cash Rent Income	\$6,500	\$6,600
Tract 2013001	Cropland Custom Farm Income	\$19,000	\$0
Tract 2013001	Cropland Custom Farm Insurance		\$9,012
Tract 2013001	FSA Income		\$8
Total		\$53,900	\$45,447




Base Layer: 2019 PRRIP Aerial Imagery



Legend

-  PVWMA Phrag Control
-  Herbicide
-  Preemergent



 0.5 Miles

NON-COMPLEX
TRACT 2009008
FY 2019 ACTIVITIES

Date: 1/28/2020
By: TRT




Figure 1




Base Layer: 2019 PRRIP Aerial Imagery



Legend

-  PVWMA Phrag Control
-  Herbicide
-  Preemergent

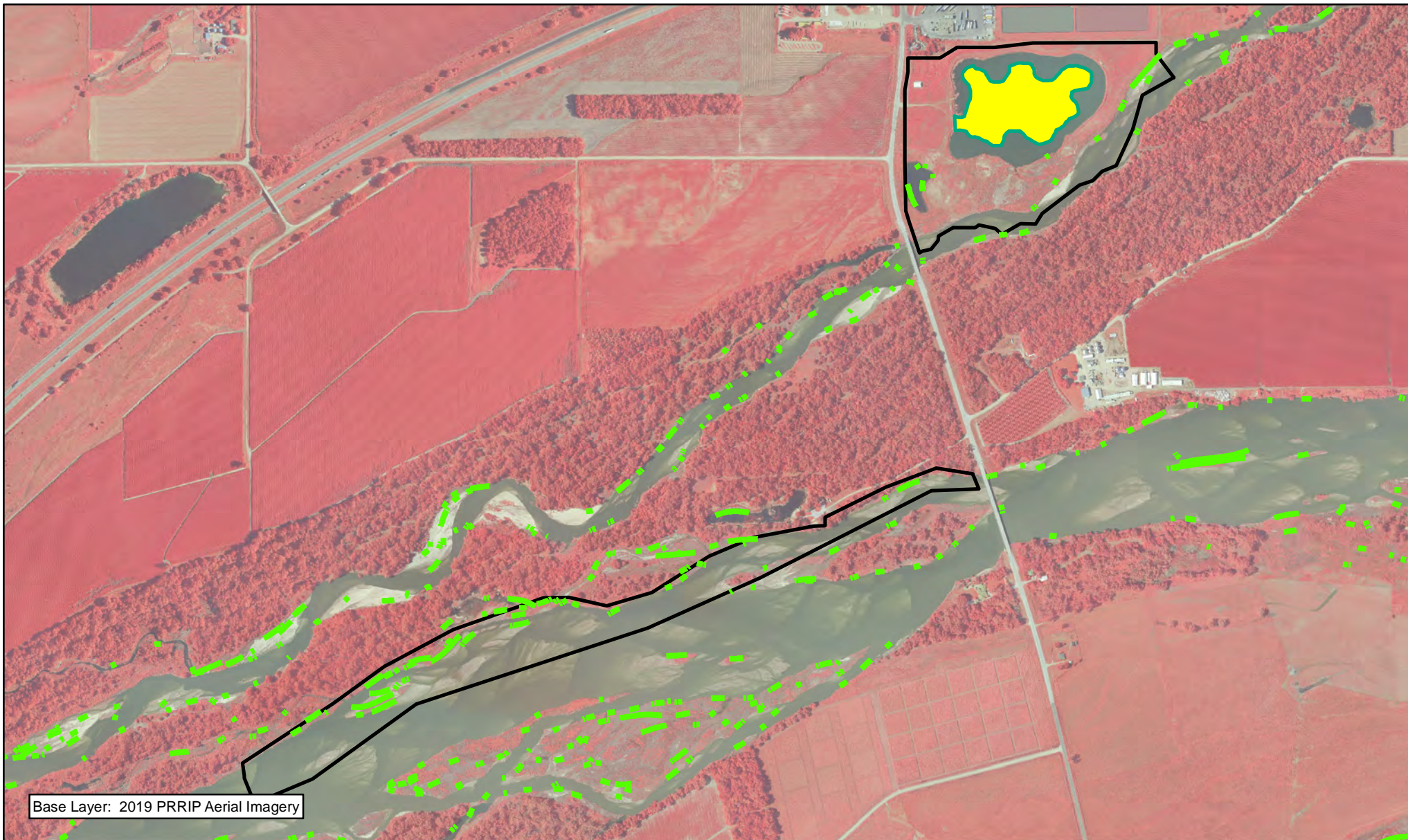


 Miles
0.1

NON-COMPLEX
TRACT 2010002
FY 2019 ACTIVITIES

Date: 1/28/2020
By: TRT

Figure 2






Base Layer: 2019 PRRIP Aerial Imagery




PLATTE RIVER
RECOVERY IMPLEMENTATION PROGRAM

Legend

-  PVWMA Phrag Control
-  Herbicide
-  Preemergent



 0.5 Miles

NON-COMPLEX
TRACT 2011001
FY 2019 ACTIVITIES

Date: 1/28/2020
By: TRT




Figure 3



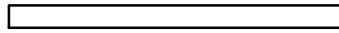
Base Layer: 2019 PRRIP Aerial Imagery



Legend

-  PVWMA Phrag Control
-  Herbicide
-  Preemergent



 0.1 Miles


NON-COMPLEX
TRACT 2011002
FY 2019 ACTIVITIES

Date: 1/28/2020
By: TRT


Figure 4



Legend

 Noxious Weed Control

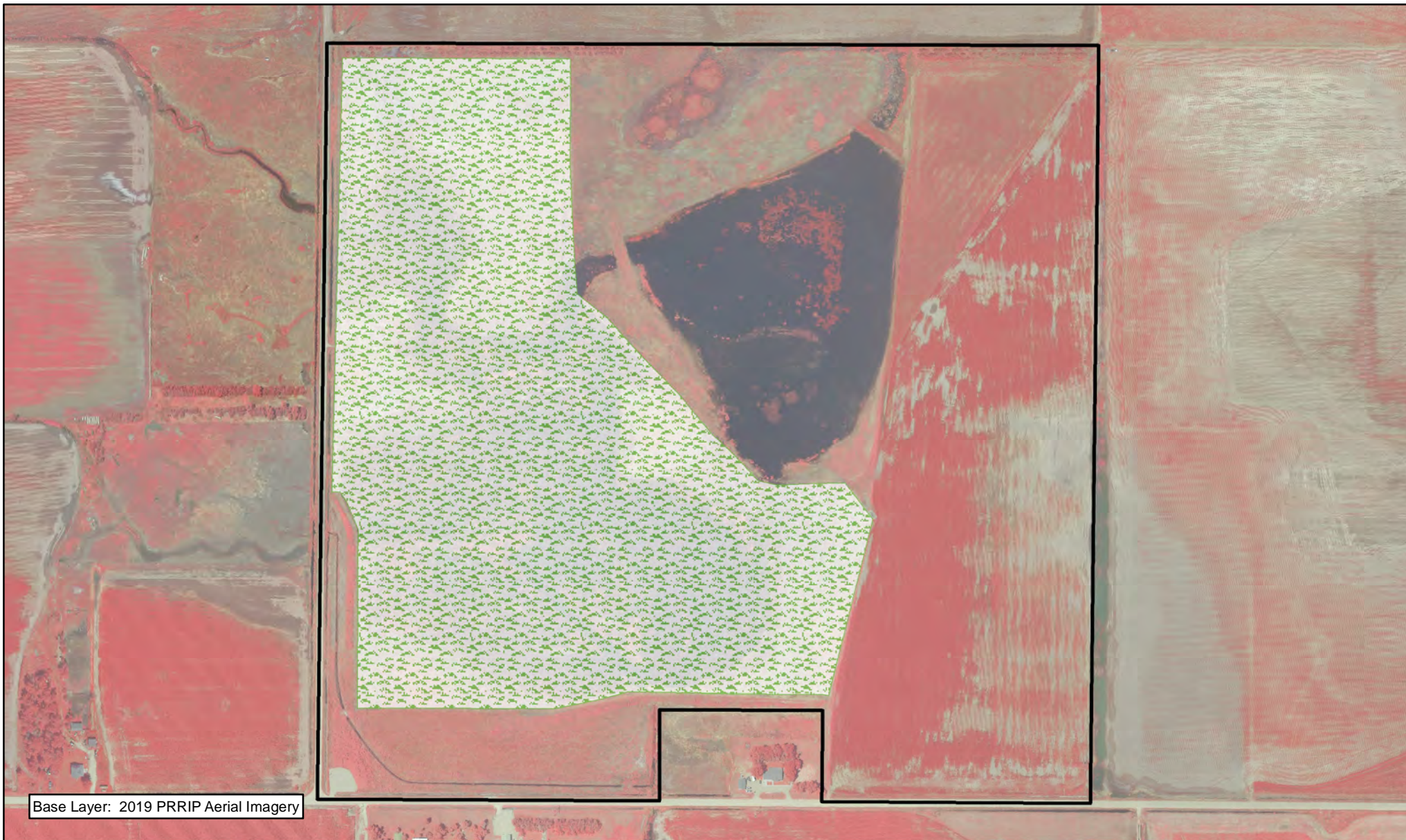


 0.2 Miles

**NON-COMPLEX
TRACT 2012004
FY 2019 ACTIVITIES**

Date: 1/28/2020
By: TRT

Figure 5



Base Layer: 2019 PRRIP Aerial Imagery



Legend



Wheat Cover Crop



0.2 Miles

NON-COMPLEX
TRACT 2013001
FY 2018 ACTIVITIES

Date: 1/28/2020
By: TRT


Figure 6



Legend

 PVWMA Phrag Control



 0.1 Miles

NON-COMPLEX
MCA ISLAND
FY 2019 ACTIVITIES

Date: 1/28/2020
By: TRT

Figure 7

2019 Plum Creek "Complex" Annual Work Plan Report

Platte River Recovery Implementation Program

For More Information Contact: Jason Farnsworth, farnsworthj@headwaterscorp.com (308) 237-5728

General Priorities

- * **Good Neighbor Policy** - Conduct all actions in accordance with Program's good neighbor policy.

Adaptive Management Priorities

- * **Implementation of full scale sediment augmentation** - Augment 40,000 cubic yards of sediment through mechanical augmentation. Augmentation will occur upstream of the Plum Creek Complex near the J-2 Return.
- * **Species Monitoring** – Monitor whooping crane use of riverine roosting habitat and least tern and piping plover use and productivity at off-channel sand and water nesting sites.

Species Habitat Priorities

- * **Improve Target Species Sand and Water Habitat** – Application of pre-emergent herbicide on OCSW peninsulas to maintain tern and plover nesting habitat. Control in-channel vegetation to maintain suitable unobstructed view widths for whooping cranes.
- * **Protecting Other Species of Concern** – Identify presence of and determine methods to protect other species of concern during implementation of land-related activities.

Operations and Maintenance Priorities

- * **Basic Property Maintenance Obligations and Needs** – Fulfill basic property ownership obligations and needs including boundary fence signage, road maintenance, and noxious weed control.
- * **Agricultural Operations** – Oversight of grazing lease on Tract 2009003. Oversight of cropland/hay leases on Tract 2009007.

NOTE: The budget section of this work plan only contains information for work items that are specific to these tracts. As such, tract-specific research and monitoring actions are presented but system-scale actions like target species and geomorphology/vegetation monitoring are not.

Priority Area: General**Item(s): Complex Land Interest and Complex-Level Planning**

No.	Management Activities	Budget Line Item	Completed	Cost (Estimated)	Actual Cost
PC 1	Coordination of Program land actions with neighboring landowners	N/A	Yes	N/A	N/A
PC 2	Coordinate with NPPD to identify and mitigate potential impacts to leased NPPD nesting islands	N/A	Yes	N/A	N/A

Priority Area: Species Habitat**Item(s): Improve Target Species Sand and Water Habitat**

No.	Management Activities	Budget Line Item	Completed	Cost (Estimated)	Actual Cost
PC 3	Herbicide applications on OCSW peninsulas to maintain bare sand nesting habitat	LP-2	Yes	\$4,300	\$4,337
PC 4	Disking if necessary to provide in-channel vegetation control (71 ac)	LP-2	No	\$19,750	\$0

Priority Area: Species Habitat**Item(s): Whooping Crane Grassland / Wet Meadow Habitat**

No.	Management Activities	Budget Line Item	Completed	Cost (Estimated)	Actual Cost
PC 5	Tract 2009003 Prescribed burn (151 ac)	LP-2	Yes	\$6,607	\$6,818
PC 6	Tract 2009007 Prescribed burn (58 ac)	LP-2	Yes	\$2,603	\$3,540

Priority Area: *Species Habitat***Item(s): *Other Species of Concern***

No.	Management Activities	Budget Line Item	Completed	Cost (Estimated)	Actual Cost
PC 7	Habitat and species surveys on properties where work will occur	N/A	Yes	N/A	N/A
PC 8	Coordination with USFWS and NGPC to identify and mitigate potential impacts associated with land activities	N/A	Yes	N/A	N/A

Priority Area: Operations and Maintenance**Item(s): *Basic Property Maintenance Obligations and Needs***

No.	Management Activities	Budget Line Item	Completed	Cost (Estimated)	Actual Cost
PC 9	Fence and road maintenance	LP-4	No	\$1,000	\$0
PC 10	Noxious weed control	LP-4	Yes	\$6,500	\$5,693
PC 11	Lodge & Quonset utilities and maintenance	LP-4	Yes	\$5,600	\$6,471
PC 12	Mowing	LP-4	Yes	\$2,000	\$2,373

Priority Area: Operations and Maintenance**Item(s): *Agricultural Operations***

No.	Management Activities	Budget Line Item	Completed	Cost (Estimated)	Actual Cost
PC 13	Oversight of grazing and cropland leases	N/A	Yes	N/A	N/A

Priority Area: *Unplanned Expenses*

2009003	Bank Stabilization		Maintain Suitable	LP-2	\$2,909
---------	--------------------	--	-------------------	------	---------

Property Identification Key:

2009003 - PRRIP Dyer Tract

2009007 - PRRIP Cook Tract

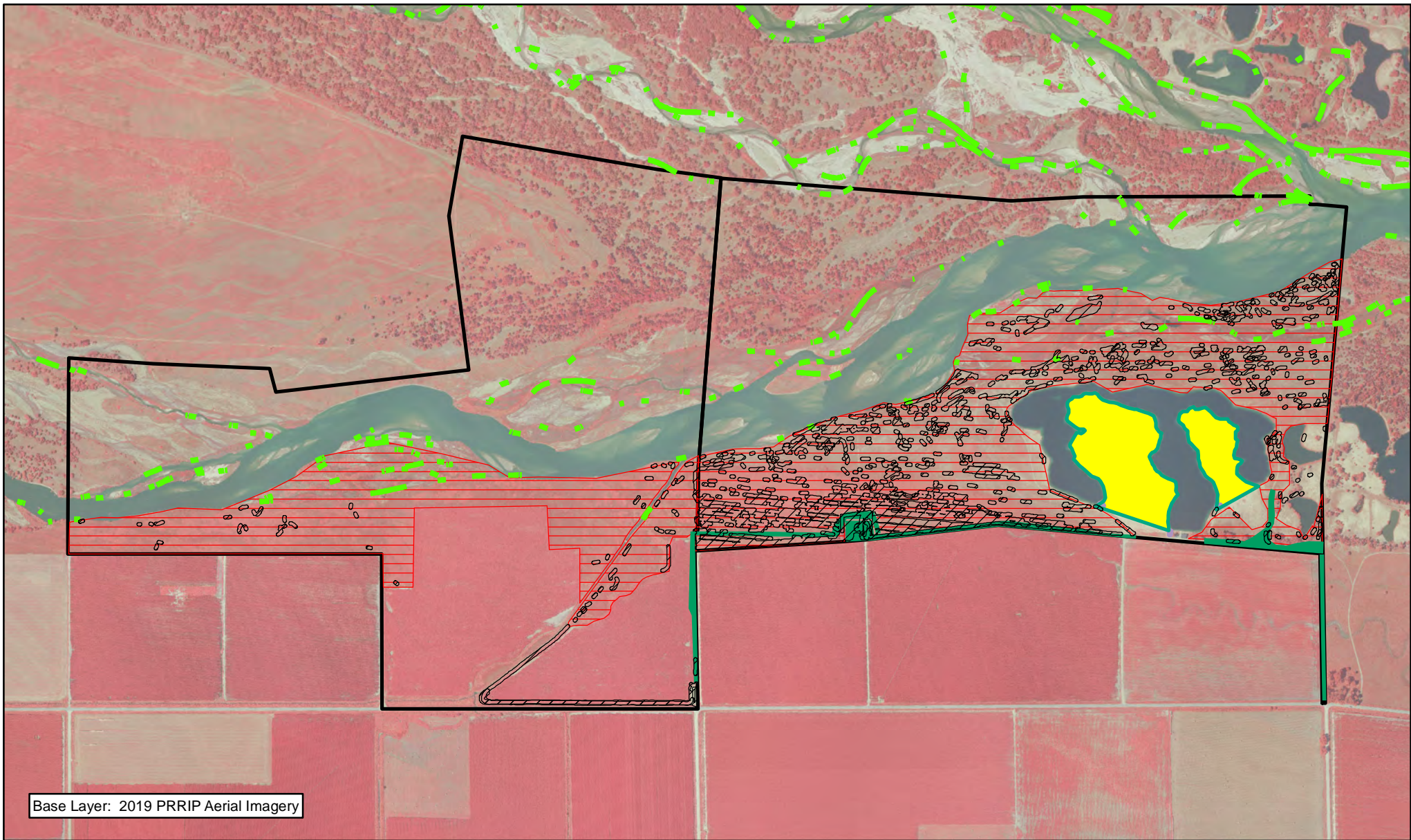
2019 Plum Creek Complex Budget Summary

2019 Expenditures by Program Budget Line Item

Priority Area	Item	Budget Line Item	Estimated Expenditure	2019 Expenditure
Species Habitat	Target Species Sand and Water Habitat	LP-2	\$24,050	\$7,246
Species Habitat	Whooping Crane Wet Meadow/ Grassland Habitat	LP-2	\$9,210	\$10,358
		Subtotal	\$33,260	\$17,604
Operations and Maintenance	Property Maintenance and Agricultural Operations	LP-4	\$15,100	\$14,537
		Total	\$48,360	\$32,141

2019 Revenues






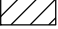

Tract	Item	Estimated Income	2019 Income
Tract 2009003	NPPD Habitat Lease	\$500	\$500
Tract 2009003	Grazing Income	\$0	\$0
Tract 2009007	Haying Income	\$0	\$0
Tract 2009007	North Pasture Grazing	\$0	\$915
Tract 2009007	Cropland Income	\$5,550	\$5,550
		Total	\$6,965




Base Layer: 2019 PRRIP Aerial Imagery



Legend

- | | |
|---|--|
|  PVWMA Phrag Control |  Prescribed Fire |
|  Herbicide |  Shredding/Mowing |
|  Preemergent |  Noxious Weed Control |
|  Bank Stabilization | |



 0.5 Miles

PLUM CREEK COMPLEX FY 2019 ACTIVITIES

Date: 1/28/2020
By: TRT

Figure 8

2019 Cottonwood Ranch Complex Annual Work Plan Report

Platte River Recovery Implementation Program

For More Information Contact: Jason Farnsworth, farnsworthj@headwaterscorp.com (308) 237-5728

General Priorities

- * **Good Neighbor Policy** - Conduct all actions in accordance with Program's good neighbor policy.

Adaptive Management Priorities

- * **Species Monitoring** – Monitor whooping crane use of riverine and off-channel palustrine wetland roosting habitat and least tern and piping plover use and productivity at off-channel sand and water nesting sites.

Species Habitat Priorities

- * **Maintain Target Species Sand and Water Habitat** – Application of pre-emergent herbicide on OCSW peninsula to maintain tern and plover nesting habitat. Control in-channel vegetation to maintain suitable unobstructed view widths for whooping cranes.
- * *Construction of Broad-Scale Recharge Water Supply and Whooping Crane Habitat Project – Construct berms and water control structures to allow for approximately 400 acres of ponded surface water in wet meadow areas south of the channel on Tracts 2008002 and 2010001. Budget for this work item is included in a Water Plan line item.*
- * *Management of grassland/wet meadow habitat for whooping cranes and sandhill cranes – Grazing will continue on Lloyd Island for the 2018 grazing season. Wet meadow areas in Section 16 T8N R19W (Tracts 2008002 and 2010001) will not be grazed/hayed during the 2019 due to Broad -Scale Recharge Water Supply and Whooping Crane Habitat Project construction. Grazing/haying management will resume as soon as project is complete.*
- * **Protecting Other Species of Concern** – Identify presence of and determine methods to protect other species of concern during implementation of land-related activities.

Operations and Maintenance Priorities

- * **Basic Property Maintenance Obligations and Needs** – Fulfill basic property ownership obligations and needs on Tracts 2008002, 2009006, and 2010001 including fence and road maintenance and noxious weed control.
- * **Agricultural Operations** – Oversight of grazing/ haying leases on Tracts 2009006 and 2010001.

NOTE: The budget section of this work plan only contains information for work items that are specific to these tracts. As such, tract-specific research and monitoring actions are presented but system-scale actions like target species and geomorphology/vegetation monitoring are not.

Priority Area: General

Item(s): *Complex Land Interest and Complex-Level Planning*

No.	Management Activities	Budget Line Item	Completed	Cost (Estimated)	Actual Cost
CR 1	Coordination of Program land actions with neighboring landowners	N/A	Yes	N/A	N/A

Priority Area: Species Habitat

Item(s): *Improve Target Species Sand and Water Habitat*

No.	Management Activities	Budget Line Item	Completed	Cost (Estimated)	Actual Cost
CR 2	Tract 2008002 Pre-emergent herbicide application on plover nesting habitat and OCSW complex	LP-2	Yes	\$4,100	\$2,756
CR 3	Disking if necessary to provide in-channel vegetation control -(~50 acres)	LP-2	No	\$13,900	\$0

Priority Area: Species Habitat**Item(s):** *Whooping Crane Grassland / Wet Meadow Habitat*

No.	Management Activities	Budget Line Item	Completed	Cost (Estimated)	Actual Cost
CR4	Tract 2010001 Prescribed burn (240 ac)	LP-2	No	\$10,470	\$0

Item(s): Other Species of Concern

No.	Management Activities	Budget Line Item	Completed	Cost (Estimated)	Actual Cost
CR5	Habitat and species surveys on properties where work will occur	N/A	Yes	N/A	N/A
CR6	Coordination with USFWS and NGPC to identify and mitigate potential impacts associated with land activities	N/A	Yes	N/A	N/A

Priority Area: Operations and Maintenance**Item(s):** *Basic Property Maintenance Obligations and Needs*

No.	Management Activities	Budget Line Item	Completed	Cost (Estimated)	Actual Cost
CR 7	Fence Replacement - (~10,560 LF)	LP-4	Yes	\$30,500	\$26,954
CR 8	Fence and road maintenance	LP-4	Yes	\$2,500	\$3,157
CR 9	Noxious weed control	LP-4	Yes	\$10,000	\$7,058
CR 10	Mowing	LP-4	No	\$1,000	\$0

Priority Area: Operations and Maintenance

Item(s): *Agricultural Operations*

No.	Management Activities	Budget Line Item	Completed	Cost (Estimated)	Actual Cost
CR 11	Tract 2009006 grazing lease oversight	N/A	Yes	N/A	N/A
CR 12	Tract 2010001 grazing lease oversight	N/A	Yes	N/A	N/A
CR 13	Tract 2010001 haying lease oversight	N/A	Yes	N/A	N/A

Priority Area: *Unplanned Expenses*

Tract No.	Management Activities	Item(s):	Budget Line Item	Actual Cost
2008002	Bridge Overflow Repair from Flooding	Basic Property Main	LP-4	\$3,182
2010001	Replace pump of Portable Solar Unit	Basic Property Main	LP-4	\$1,308
2010001	Electricity	Basic Property Main	LP-4	\$2,250

Property Identification Key:

2008002 - NPPD Cottonwood Ranch

2009006 - PRRIP Stall Tract

2010001 - PRRIP Morse Tract

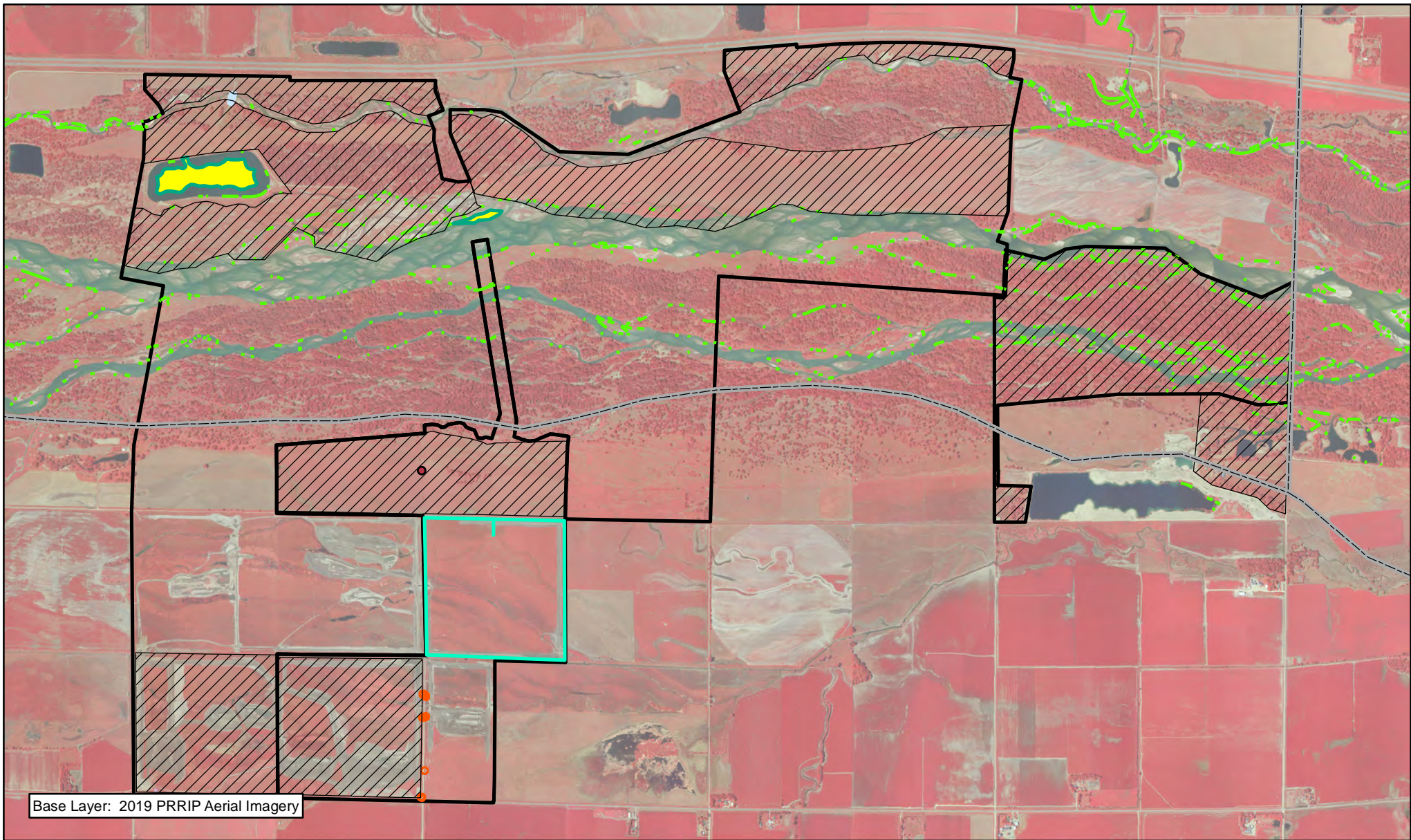
2019 Cottonwood Ranch Complex Budget Summary

2019 Expenditures by Program Budget Line Item

Priority Area	Item	Budget Line Item	Estimated Expenditure	2019 Expenditure
Species Habitat	Target Species Sand and Water Habitat	LP-2	\$18,000	\$2,756
Species Habitat	Whooping Crane Wet Meadow/ Grassland Habitat	LP-2	\$10,470	\$0
Subtotal			\$28,470	\$2,756
Operations and Maintenance	Property Maintenance and Agricultural Operations	LP-4	\$44,000	\$43,909
Total			\$72,470	\$46,665

2019 Revenues

Tract	Item	Estimated Income	2019 Income
Tract 2009006	Grazing Income	\$2,000	\$0
Tract 2010001	Grazing Income	\$0	\$6,107
Tract 2010001 SE 1/4	Grazing Income	\$0	\$0
Tract 2010001	Haying Income	\$2,500	\$0
Total		\$4,500	\$6,107



Legend

- | | |
|----------------------|-----------------------------|
| County | Preemergent |
| PVWMA Phrag Control | Bridge Repair |
| Noxious Weed Control | Concrete |
| Herbicide | Barbwire Fence Construction |
| | Well Repair |



1 Miles

COTTONWOOD RANCH COMPLEX FY 2019 ACTIVITIES

Date: 1/28/2020
By: TRT

Figure 9

2019 Elm Creek Complex Annual Work Plan Report

Platte River Recovery Implementation Program

For More Information Contact: Jason Farnsworth, farnsworthj@headwaterscorp.com (308) 237-5728

General Priorities

- * **Good Neighbor Policy** - Conduct all actions in accordance with Program's good neighbor policy.

Adaptive Management Priorities

- * **Species Monitoring** – Monitor whooping crane use of in-channel roosting habitat and least tern and piping plover use and productivity at off-channel sand and water nesting sites.

Species Habitat Priorities

- * **Maintain Target Species Sand and Water Habitat** – Control in-channel vegetation to maintain suitable unobstructed view widths for whooping cranes.
- * **Protecting Other Species of Concern** – Identify presence of and determine methods to protect other species of concern during implementation of land-related activities.

Operations and Maintenance Priorities

- * **Basic Property Maintenance Obligations and Needs** – Fulfill basic property ownership obligations and needs on Tracts 2009002, 2009005, 2012001 and 2012002 including fence and road maintenance and noxious weed control.
- * **Agricultural Operations** – Oversight of grazing/ haying leases on Tracts 2009005, 2012001 and 2012002.

NOTE: The budget section of this work plan only contains information for work items that are specific to these tracts. As such, tract-specific research and monitoring actions are presented but system-scale actions like target species and geomorphology/vegetation monitoring are not.

Priority Area: General**Item(s):** *Complex Land Interest and Complex-Level Planning*

No.	Management Activities	Budget Line Item	Completed	Cost (Estimated)	Actual Cost
EC 1	Coordination of Program land actions with neighboring landowners	N/A	Yes	N/A	N/A

Priority Area: Species Habitat**Item(s):** *Improve Target Species Sand and Water Habitat*

No.	Management Activities	Budget Line Item	Completed	Cost (Estimated)	Actual Cost
EC 2	In-channel cross disking (below diversion) and overbank mowing to maintain active channel and unobstructed view widths (50 acres)	LP-2	No	\$13,900	\$0

Priority Area: Species Habitat**Item(s):** *Whooping Crane Grassland / Wet Meadow Habitat*

No.	Management Activities	Budget Line Item	Completed	Cost (Estimated)	Actual Cost
EC 3	Tract 2009005 Prescribed burn (45 ac)	LP-2	No	\$1,949	\$0
EC 4	Tract 2012001 Prescribed burn (64 ac)	LP-2	No	\$2,805	\$0
EC 5	Tract 2012002 Prescribed burn (193 ac)	LP-2	Yes	\$8,406	\$11,184
EC 6	Clear Trees & Burn, Bury at NE corner of tract 2012002	LP-2	Yes	\$7,000	\$17,625

Priority Area: Species Habitat**Item(s): Other Species of Concern**

No.	Management Activities	Budget Line Item	Completed	Cost (Estimated)	Actual Cost
EC 7	Habitat and species surveys on properties where work will occur	N/A	Yes	N/A	N/A
EC 8	Coordination with USFWS and NGPC to identify and mitigate potential impacts associated with land activities	N/A	Yes	N/A	N/A

Priority Area: Operations and Maintenance**Item(s): Basic Property Maintenance Obligations and Needs**

No.	Management Activities	Budget Line Item	Completed	Cost (Estimated)	Actual Cost
EC 9	Tract 2009002 building utilities and maintenance	LP-4	Yes	\$2,000	\$2,410
EC 10	Fence and road maintenance	LP-4	Yes	\$1,000	\$5,233
EC 11	Mowing	LP-4	yes	\$1,500	\$1,598
EC 12	Noxious weed control	LP-4	Yes	\$16,000	\$14,750

Priority Area: Operations and Maintenance**Item(s): Agricultural Operations**

No.	Management Activities	Budget Line Item	Completed	Cost (Estimated)	Actual Cost
EC 13	Tract 2009002 Crop oversight	N/A	Yes	N/A	N/A
EC 14	Tract 2009005 grazing lease oversight	N/A	Yes	N/A	N/A
EC 15	Tract 2012001 haying lease oversight	N/A	Yes	N/A	N/A
EC 16	Tract 2012002 grazing lease oversight	N/A	Yes	N/A	N/A

Priority Area: *Unplanned Expenses*

Tract No.	Management Activities	Item(s):	Budget Line Item	Actual Cost
2012002	Erosion repair	Whooping Crane Gra	LP-2	\$6,399

Property Identification Key:

2009002 – PRRIP Bartels Tract

2009005 – PRRIP McCormick Tract

2012001 – PRRIP Sullwold Tract

2012002 – PRRIP Johns Tract

2015003 – Blue Hole East

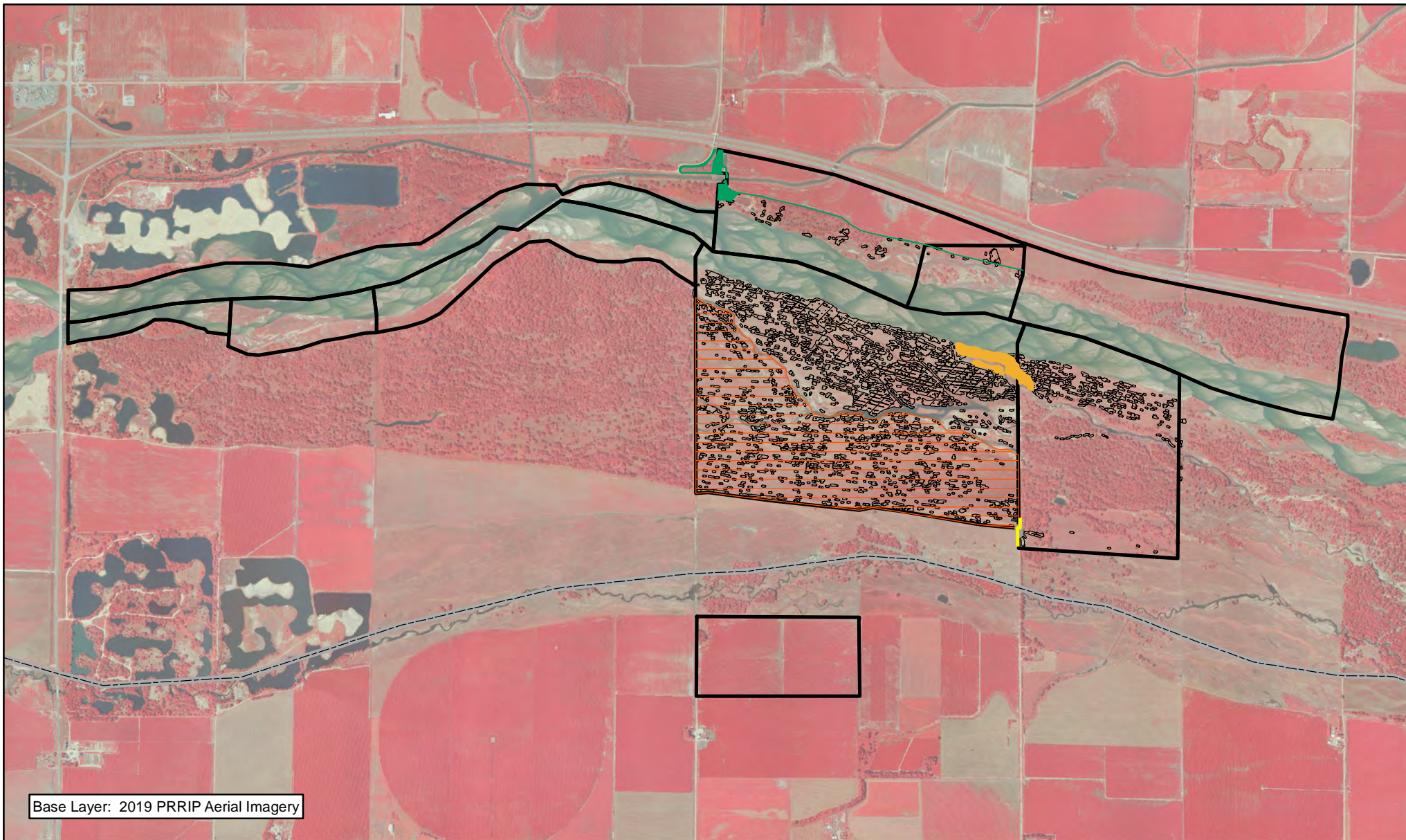
2019 Elm Creek Complex Budget Summary

2019 Expenditures by Program Budget Line Item

Priority Area	Item	Budget Line Item	Estimated Expenditure	2019 Expenditure
Species Habitat	Target Species Sand and Water Habitat	LP-2	\$13,900	\$0
Species Habitat	Whooping Crane Wet Meadow/ Grassland Habitat	LP-2	\$20,160	\$35,208
Subtotal			\$34,060	\$35,208
Operations and Maintenance	Property Maintenance and Agricultural Operations	LP-4	\$20,500	\$23,991
Total			\$54,560	\$59,199

2019 Revenues

Tract	Item	Estimated Income	2019 Income
Tract 2009002	Crop Income	\$4,350	\$4,350
Tract 2009005	Grazing Income	\$2,500	\$3,500
Tract 2012001	Haying Income	\$2,000	\$0
Tract 2012002	Grazing Income	\$6,000	\$8,100
Total		\$14,850	\$15,950



Legend

- | | |
|----------------------|------------------|
| County | Road Maintenance |
| PVWMA Phrag Control | Prescribed Fire |
| Noxious Weed Control | Shredding/Mowing |
| Tree Clearing | Fence Repair |



Miles

1

ELM CREEK COMPLEX FY 2019 ACTIVITIES

Date: 1/28/2020
By: TRT

Figure 10

2019 Pawnee Complex Annual Work Plan Report

Platte River Recovery Implementation Program

For More Information Contact: Jason Farnsworth, farnsworthj@headwaterscorp.com (308) 237-5728

General Priorities

- * **Good Neighbor Policy** - *Conduct all actions in accordance with Program's good neighbor policy.*

Adaptive Management Priorities

- * **Species Monitoring** – *Monitor whooping crane use of in-channel roosting habitat.*

Species Habitat Priorities

- * **Maintain Target Species Sand and Water Habitat** – *Control in-channel vegetation to maintain suitable unobstructed view widths for whooping cranes. Remove vegetation from overbank areas adjacent to the channel to promote channel widening through lateral erosion.*
- * **Protecting Other Species of Concern** – *Identify presence of and determine methods to protect other species of concern during implementation of land-related activities.*

Operations and Maintenance Priorities

- * **Basic Property Maintenance Obligations and Needs** – *Fulfill basic property ownership obligations and needs on Tracts 2014002 and 2015002.*
- * **Agricultural Operations** – *Oversight of grazing/ haying leases on Tracts 2014002 and 2015002.*

NOTE: The budget section of this work plan only contains information for work items that are specific to these tracts. As such, tract-specific research and monitoring actions are presented but system-scale actions like target species and geomorphology/vegetation monitoring are not.

Priority Area: General**Item(s):** *Complex Land Interest and Good Neighbor Policy*

No.	Management Activities	Budget Line Item	Completed	Cost (Estimated)	Actual Cost
PAW 1	Coordination of Program land actions with neighboring landowners	N/A		N/A	N/A

Priority Area: Adaptive Management & Target Species Habitat**Item(s):** *Tern, Plover and Whooping Crane Riverine Habitat Experiments*

No.	Management Activities	Budget Line Item	Completed	Cost (Estimated)	Actual Cost
PAW 2	Herbicide treatment on south bank to kill vegetation prior to disking	LP-2	Yes	\$2,000	\$1,188
PAW 3	In-channel cross disking and overbank mowing to maintain active channel and unobstructed view widths (100 ac)	LP-2	No	\$27,800	\$0

Priority Area: Species Habitat**Item(s):** *Other Species of Concern*

No.	Management Activities	Budget Line Item	Completed	Cost (Estimated)	Actual Cost
PAW 4	Habitat and species surveys on properties where work will occur	N/A	Yes	N/A	N/A
PAW 5	Coordination with USFWS and NGPC to identify and mitigate potential impacts associated with land activities	N/A	Yes	N/A	N/A

Priority Area: Operations and Maintenance**Item(s):** *Basic Property Maintenance Obligations and Needs*

No.	Management Activities	Budget Line Item	Completed	Cost (Estimated)	Actual Cost
PAW 6	Noxious weed control - (~675 acres)	LP-4	Yes	\$9,000	\$3,611
PAW 7	Fence and road maintenance	LP-4	Yes	\$2,000	\$894

Priority Area: Operations and Maintenance**Item(s):** *Agricultural Operations*

No.	Management Activities	Budget Line Item	Completed	Cost (Estimated)	Actual Cost
PAW 8	Tract 2014002 oversight	N/A	Yes	N/A	N/A
PAW 9	Tract 2015002 oversight	N/A	Yes	N/A	N/A

Priority Area: Unplanned Expenses

Tract No.	Management Activities	Item(s):	Budget Line Item	Actual Cost
2015002	Ground prep, alfalfa seed, drilling & rollerpack	Agricultural Operatic	LP-4	\$3,175

Property Identification Key:

2014002 - PRRIP Volentine Tract

2015002 - PRRIP BELF Tract

Agreement #10 (1605) - P. Broadfoot

Agreement #11 (1008) - NE DOR Lease

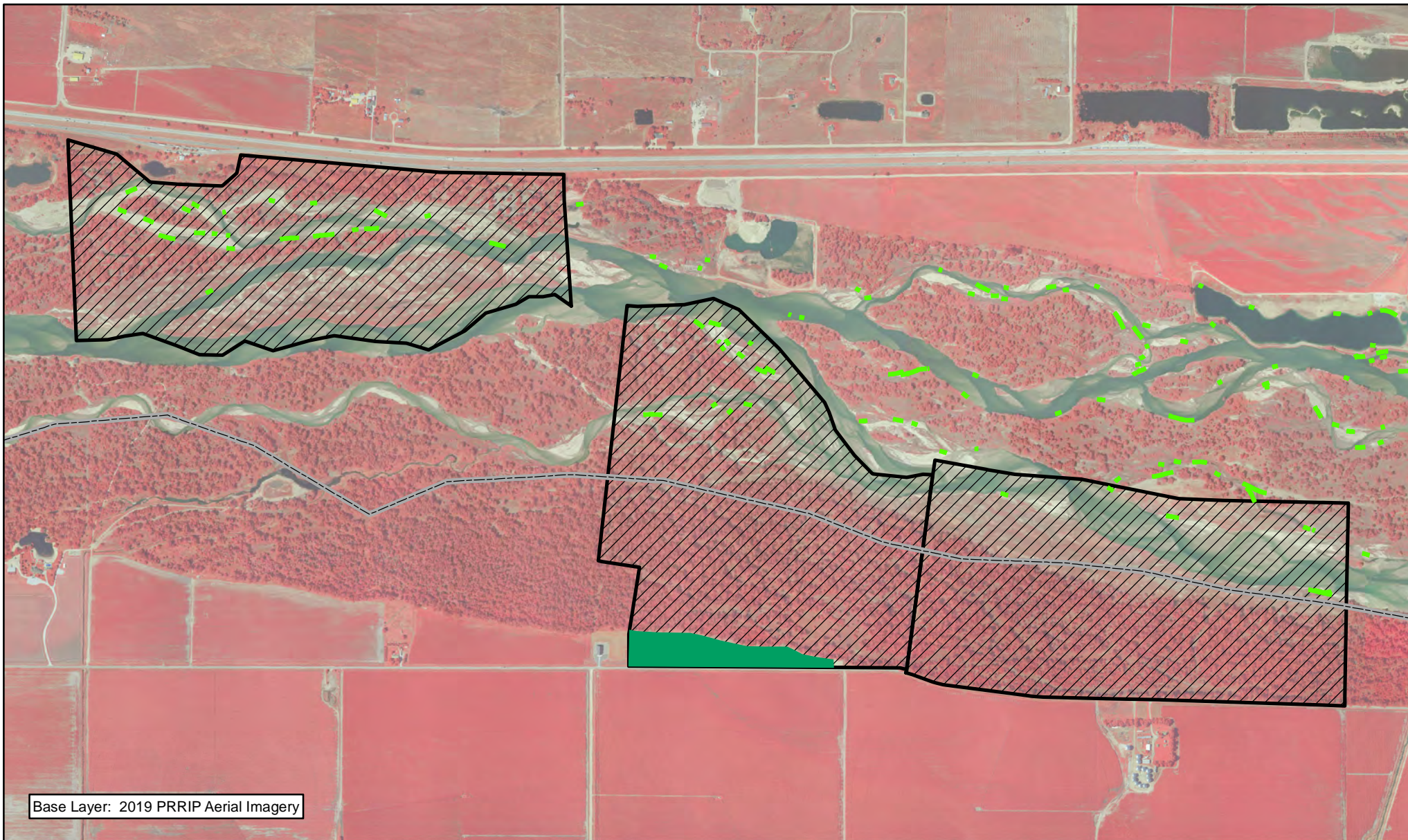
2019 Pawnee Complex Budget Summary

2019 Expenditures by Program Budget Line Item

Priority Area	Item	Budget Line Item	Estimated Expenditure	2019 Expenditure
Adaptive Management & Species Habitat	Target Species Sand and Water Habitat	LP-2	\$29,800	\$1,188
Operations and Maintenance	Property Maintenance and Agricultural Operations	LP-4	\$11,000	\$7,680
		Total	\$40,800	\$8,868

2019 Revenues



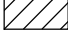

Tract	Item	Estimated Income	2019 Income
Tract 2015002	Crop Income	\$540	\$585
Tract 2015002	Grazing Income	\$2,325	\$1,274
Tract 2014002	Grazing Income	\$2,325	\$1,274
	Total	\$5,190	\$3,132




Base Layer: 2019 PRRIP Aerial Imagery



Legend

-  County
-  PVWMA Phrag Control
-  Noxious Weed Control
-  Crop-alfalfa



 Miles
0.5

PAWNEE COMPLEX
FY 2019 ACTIVITIES

Date: 1/28/2020
By: TRT

Figure 11

2019 Fort Kearny Complex Annual Work Plan Report

Platte River Recovery Implementation Program

For More Information Contact: Jason Farnsworth, farnsworthj@headwaterscorp.com (308) 237-5728

General Priorities

- * **Good Neighbor Policy** - *Conduct all actions in accordance with Program's good neighbor policy.*

Adaptive Management Priorities

- * **Species Monitoring** – Monitor whooping crane use of off-channel palustrine wetlands and in-channel roosting habitat.

Species Habitat Priorities

- * **Maintain Target Species Sand and Water Habitat** – *Control in-channel vegetation to maintain suitable unobstructed view widths for whooping cranes. Remove vegetation from overbank areas adjacent to the channel to promote channel widening through lateral erosion.*
- * **Protecting Other Species of Concern** – Identify presence of and determine methods to protect other species of concern during implementation of land-related activities.

Operations and Maintenance Priorities

- * **Basic Property Maintenance Obligations and Needs** – Fulfill basic property ownership obligations and needs on Tracts 2008001, 2009001, 2009004, 2010003, 2012003 and 2015001 including fence and road maintenance and noxious weed control.
- * **Agricultural Operations** – Oversight of grazing/haying leases on Tracts 2008001, 2012003, 2009001, 2009004, and 2015001.

NOTE: The budget section of this work plan only contains information for work items that are specific to these tracts. As such, tract-specific research and monitoring actions are presented but system-scale actions like target species and geomorphology/vegetation monitoring are not.

Priority Area: General**Item(s):** *Complex Land Interest and Good Neighbor Policy*

No.	Management Activities	Budget Line Item	Completed	Cost (Estimated)	Actual Cost
FK 1	Coordination of Program land actions with neighboring landowners	Annual	Yes	N/A	N/A

Priority Area: Species Habitat**Item(s):** *Improve Target Species Sand and Water Habitat*

No.	Management Activities	Budget Line Item	Completed	Cost (Estimated)	Actual Cost
FK 2	Disking if necessary to provide in-channel vegetation control (~83 ac)	LP-2	No	\$23,075	\$0

Priority Area: Species Habitat**Item(s):** *Whooping Crane Grassland / Wet Meadow Habitat*

No.	Management Activities	Budget Line Item	Completed	Cost (Estimated)	Actual Cost
FK 3	Tract 2009001 Annual electrical service fee at irrigation well to supplement water to wetland	LP-2	Yes	\$5,400	\$2,588
FK 4	Tract 2008001-South Prescribe burn (46 ac)	LP-2	Yes	\$1,989	\$3,787
FK 5	Tract 2012003- Prescribe burn (77 ac)	LP-2	Yes	\$3,360	\$3,272
FK 6	Tract 2015001 NE unit Prescribe burn (174 ac)	LP-2	Yes	\$7,593	\$8,426

Priority Area: Species Habitat**Item(s):** *Other Species of Concern*

No.	Management Activities	Budget Line Item	Completed	Cost (Estimated)	Actual Cost
FK 7	Habitat and species surveys on properties where work will occur	As Needed	Yes	N/A	N/A
FK 8	Coordination with USFWS and NGPC to identify and mitigate potential impacts associated with land activities	As Needed	Yes	N/A	N/A

Priority Area: Operations and Maintenance**Item(s):** *Basic Property Maintenance Obligations and Needs*

No.	Management Activities	Budget Line Item	Completed	Cost (Estimated)	Actual Cost
FK 9	Tract 2009004 & 2015001 Electricity	LP-4	Yes	\$600	\$779
FK 10	Noxious weed control	LP-4	Yes	\$21,500	\$18,862
FK 11	Fence and road maintenance	LP-4	Yes	\$4,500	\$4,059
FK 12	Mowing	LP-4	Yes	\$1,000	\$0

Item(s): *Agricultural Operations*

No.	Management Activities	Budget Line Item	Completed	Cost (Estimated)	Actual Cost
FK 13	Tract 2008001 grazing lease oversight	N/A	Yes	N/A	N/A
FK 14	Tract 2012003 grazing lease oversight	N/A	Yes	N/A	N/A
FK 15	Tract 2015001 grazing lease oversight	N/A	Yes	N/A	N/A

Priority Area: *Unplanned Expenses*

Tract No.	Management Activities	Item(s):	Budget Line Item	Actual Cost
2008001	Installed solar pump on south meadow	Basic Property Main	LP-4	\$3,247
2015001	Replace well cylinder on windmill & repair fittings on submersible	Basic Property Main	LP-4	\$1,058
2015001	Burn & bury tree piles	Whooping Crane Gr	LP-2	\$2,190
2009004	Tract 2009004 Prescribe burn (88 ac)	Whooping Crane Gr	LP-2	\$4,252

Property Identification Key:

2008001 – PRRIP Wyoming Property

2009001 – PRRIP Fox Tract

2009004 – PRRIP Hostetler Tract

2010003 – PRRIP Sherrerd/Clark Easement

2012003 – PRRIP Blessing Tract

2015001 – PRRIP Speidell Tract

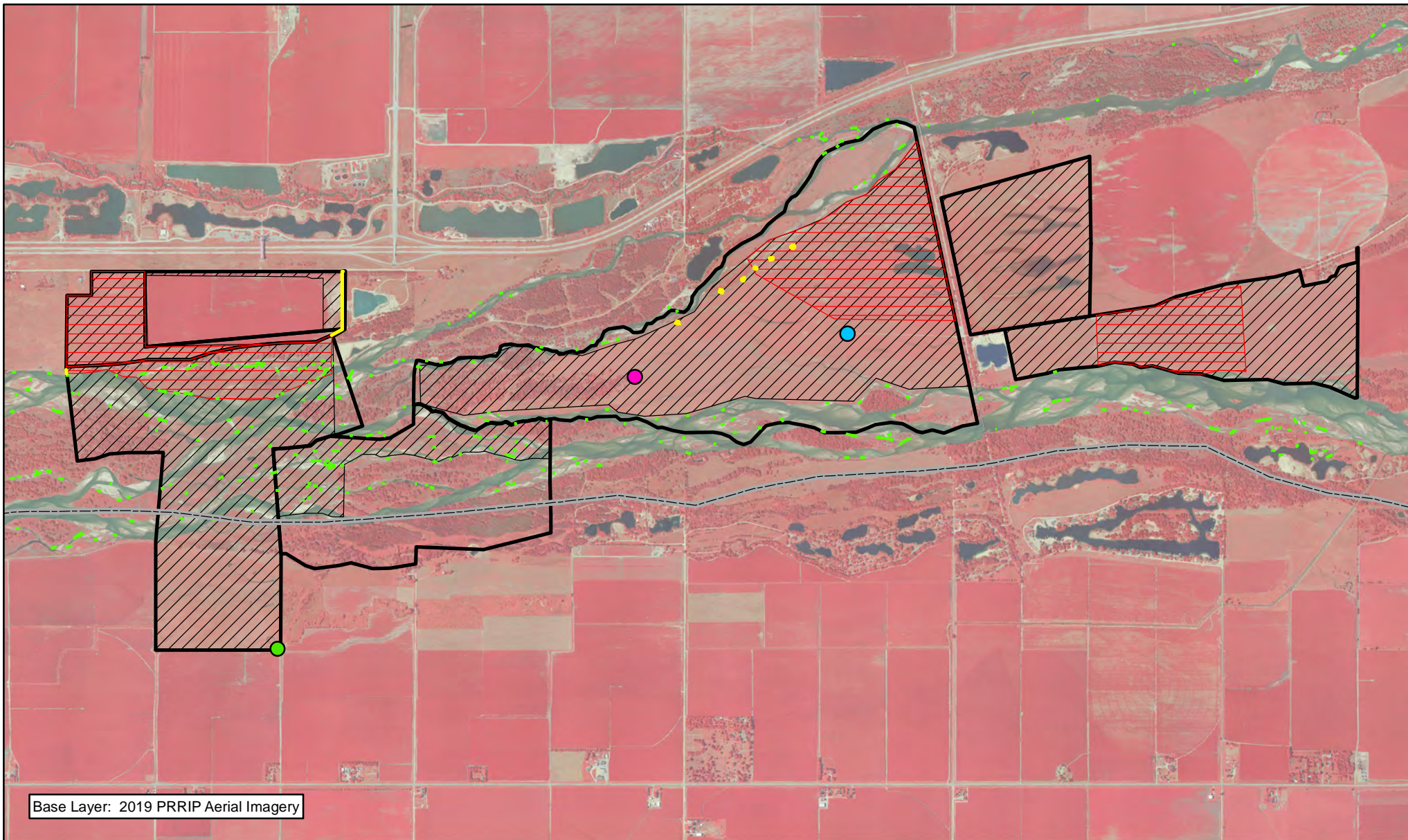
2019 Ft Kearny Complex Budget Summary

2019 Expenditures by Program Budget Line Item

Priority Area	Item	Budget Line Item	Estimated Expenditure	2019 Expenditure
Species Habitat	Improve Sand and Water Habitat	LP-2	\$23,075	\$0
Species Habitat	Whooping Crane Wet Meadow/ Grassland Habitat	LP-2	\$18,342	\$24,515
Subtotal			\$41,417	\$24,515
Operations and Maintenance	Property Maintenance and Agricultural Operations	LP-4	\$27,600	\$28,005
Total			\$69,017	\$52,520

2019 Revenues

Tract	Item	Estimated Income	2019 Income
Tract 2008001 N & 2012003	Grazing Income	\$0	\$0
Tract 2008001 S	Grazing Income	\$7,000	\$5,500
Tract 2009001	Grazing Income	\$0	\$0
Tract 2009004	Grazing Income	\$11,550	\$11,825
Tract 2012003	Cropland Income	\$1,850	\$1,800
Tract 2015001	Grazing Income	\$16,500	\$12,009
Total		\$36,900	\$31,134



Legend

- | | |
|-----------------------------|-----------------------------|
| County | Barbwire Fence Construction |
| PVWMA Phrag Control | Solar Livestock Water |
| Noxious Weed Control | Well Repair |
| Prescribed Fire | Windmill Repair |
| Cattail/Phragmites Spraying | |
| Burning Tree Piles | |



Miles
1

FT. KEARNY COMPLEX FY 2019 ACTIVITIES

Date: 1/28/2020
By: TRT

Figure 12

2019 Minden – Gibbon Management Agreement Annual Work Plan Report

Platte River Recovery Implementation Program

For More Information Contact: Jason Farnsworth, farnsworthj@headwaterscorp.com (308) 237-5728

Adaptive Management Priorities

- * **Species Monitoring** – Monitor whooping crane use of in-channel roosting habitat.

Species Habitat Priorities

- * **Maintain Target Species Sand and Water Habitat** – Control in-channel vegetation to maintain suitable unobstructed view widths for whooping cranes.
- * **Protecting Other Species of Concern** – Identify presence of and determine methods to protect other species of concern during implementation of land-related activities.

Priority Area: Species Habitat

Item(s): *Improve Target Species Sand and Water Habitat*

No.	Management Activities	Budget Line Item	Completed	Cost (Estimated)	Actual Cost
M-G 1	Disking if necessary to provide in-channel vegetation control (~70 ac)	LP-2	No	\$20,295	\$0

Personnel Responsibility Key

BS – Bruce Sackett (Director of Acquisitions)

DB – David Baasch (Director of Biological and Ecological Services)

JB – Justin Brei (Biosystems Engineer)

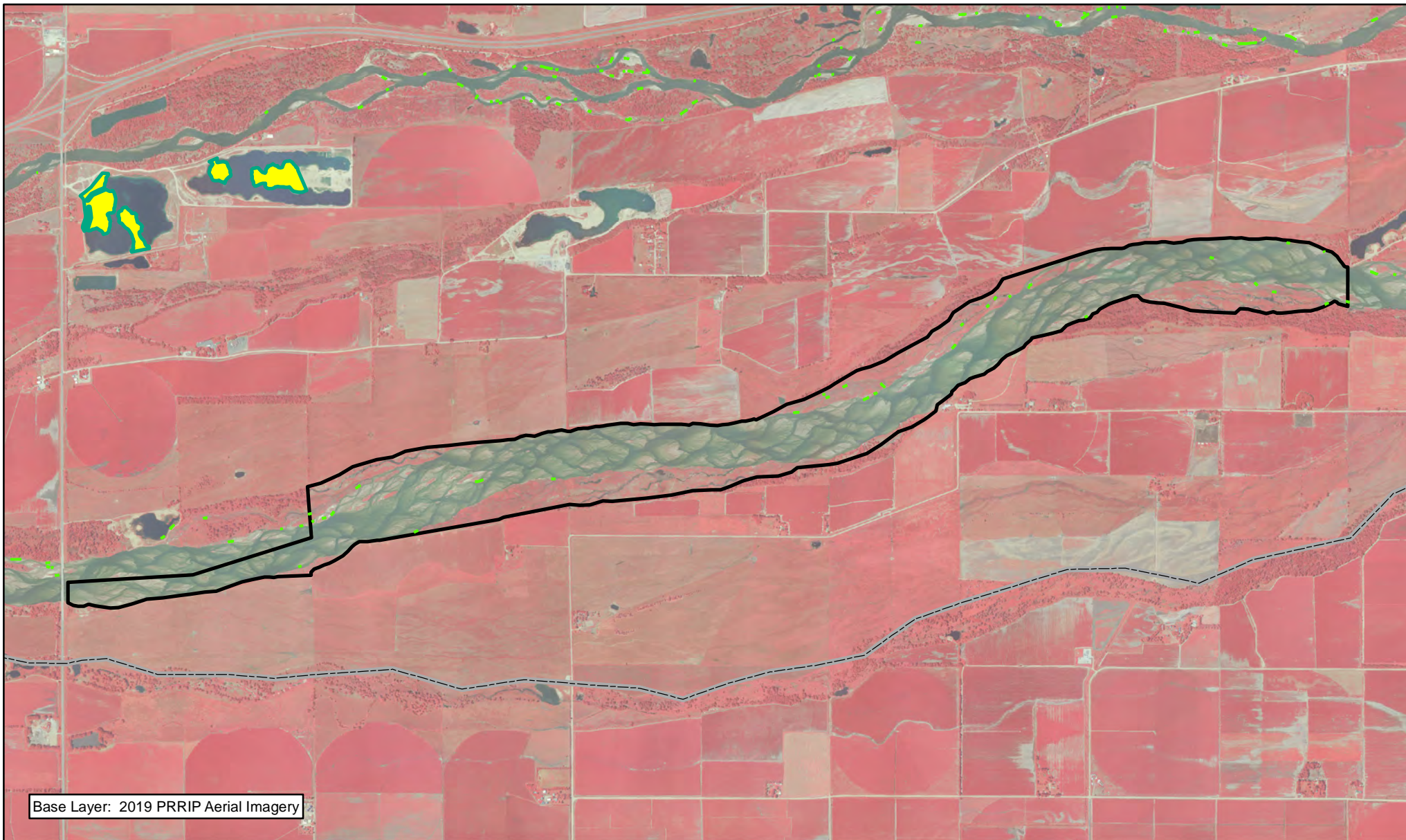
KW – Kevin Werbylo (Water Resource Engineer)

TT – Tim Tunnell (Senior Land Manager)

2019 Minden-Gibbon Management Agreement Budget Summary

2019 Expenditures by Program Budget Line Item

Priority Area	Item	Budget Line Item	Estimated Expenditure	2019 Expenditure
Species Habitat	Improve Target Species Sand and Water Habitat	LP-2	\$20,295	\$0
		Total	\$20,295	\$0







Base Layer: 2019 PRRIP Aerial Imagery




PLATTE RIVER
RECOVERY IMPLEMENTATION PROGRAM

Legend

-  County
-  PVWMA Phrag Control
-  Herbicide
-  Preemergent



 Miles

1

MINDEN-GIBBON COMPLEX FY 2019 ACTIVITIES

Date: 1/28/2020
By: TRT

Figure 13

2019 Clark Island Complex Annual Work Plan Report

Platte River Recovery Implementation Program

For More Information Contact: Jason Farnsworth, farnsworthj@headwaterscorp.com (308) 237-5728

General Priorities

- * **Good Neighbor Policy** - *Conduct all actions in accordance with Program's good neighbor policy.*

Adaptive Management Priorities

- * **Species Monitoring** – *Monitor whooping crane use of palustrine wetlands and in-channel roosting habitat.*
- * **Off-Channell Tern and Plover Nesting Habitat** – *Design and construction of ??-acre off-channel sand and water (OCSW)tern and*

Species Habitat Priorities

- * **Maintain Target Species Sand and Water Habitat** – *Control in-channel vegetation to maintain suitable unobstructed view widths for whooping cranes.*
- * **Protecting Other Species of Concern** – *Identify presence of and determine methods to protect other species of concern during implementation of land-related activities.*

Operations and Maintenance Priorities

- * **Basic Property Maintenance Obligations and Needs** – *Fulfill basic property ownership obligations and needs on Tract 2010004 including fence and road maintenance and noxious weed control.*
- * **Agricultural Operations** – *Oversight of grazing/ haying leases on Tract 2010004*

NOTE: The budget section of this work plan only contains information for work items that are specific to these tracts. As such, tract-specific research and monitoring actions are presented but system-scale actions like target species and geomorphology/vegetation monitoring are not.

Priority Area: General**Item(s):** *Complex Land Interest and Complex-Level Planning*

No.	Management Activities	Budget Line Item	Completed	Cost (Estimated)	Actual Cost
CI 1	Coordination of Program land actions with neighboring landowners	N/A	Yes	N/A	N/A

Priority Area: Adaptive Management**Item(s):** *Off-Channel Tern and Plover Nesting Habitat*

No.	Management Activities	Budget Line Item	Completed	Cost (Estimated)	Actual Cost
CI 2	Engineering design, permitting and bidding	N/A	No	N/A	N/A
CI 3	Construction of OCSW habitat	LP-2	No	\$1,800,000	\$0

Priority Area: Species Habitat**Item(s):** *Improve Target Species Sand and Water Habitat*

No.	Management Activities	Budget Line Item	Completed	Cost (Estimated)	Actual Cost
CI 4	Disking if necessary to provide in-channel vegetation control (~90 ac)	LP-2	No	\$25,000	\$0

Priority Area: Species Habitat**Item(s):** *Whooping Crane Grassland / Wet Meadow Habitat*

No.	Management Activities	Budget Line Item	Completed	Cost (Estimated)	Actual Cost
CI 5	Tract 2018001 Russian Olive & Tree Pile Removal	LP-2	No	\$15,000	\$0

Priority Area: Species Habitat**Item(s):** *Other Species of Concern*

No.	Management Activities	Budget Line Item	Completed	Cost (Estimated)	Actual Cost
CI 6	Habitat and species surveys on properties where work will occur	N/A	Yes	N/A	N/A
CI 7	Coordination with USFWS and NGPC to identify and mitigate potential impacts associated with land activities	N/A	Yes	N/A	N/A

Priority Area: Operations and Maintenance**Item(s):** *Basic Property Maintenance Obligations and Needs*

No.	Management Activities	Budget Line Item	Completed	Cost (Estimated)	Actual Cost
CI 8	Fence and road maintenance	LP-4	Yes	\$10,000	\$7,554
CI 9	Noxious weed control	LP-4	Yes	\$4,500	\$3,489
CI 10	Mowing	LP-4	No	\$1,500	\$0

Priority Area: Operations and Maintenance**Item(s):** *Agricultural Operations*

No.	Management Activities	Budget Line Item	Completed	Cost (Estimated)	Actual Cost
CI 11	Tract 2018001 grazing & haying lease oversight	N/A	Yes	N/A	N/A

Personnel Responsibility Key

BS – Bruce Sackett (Director of Acquisitions)

DB – David Baasch (Director of Biological and Ecological Services)

JB – Justin Brei (Biosystems Engineer)

KW – Kevin Werbylo (Water Resource Engineer)

TT – Tim Tunnell (Senior Land Manager)

Property Identification Key:

2018001 – PRRIP Dippel Tract

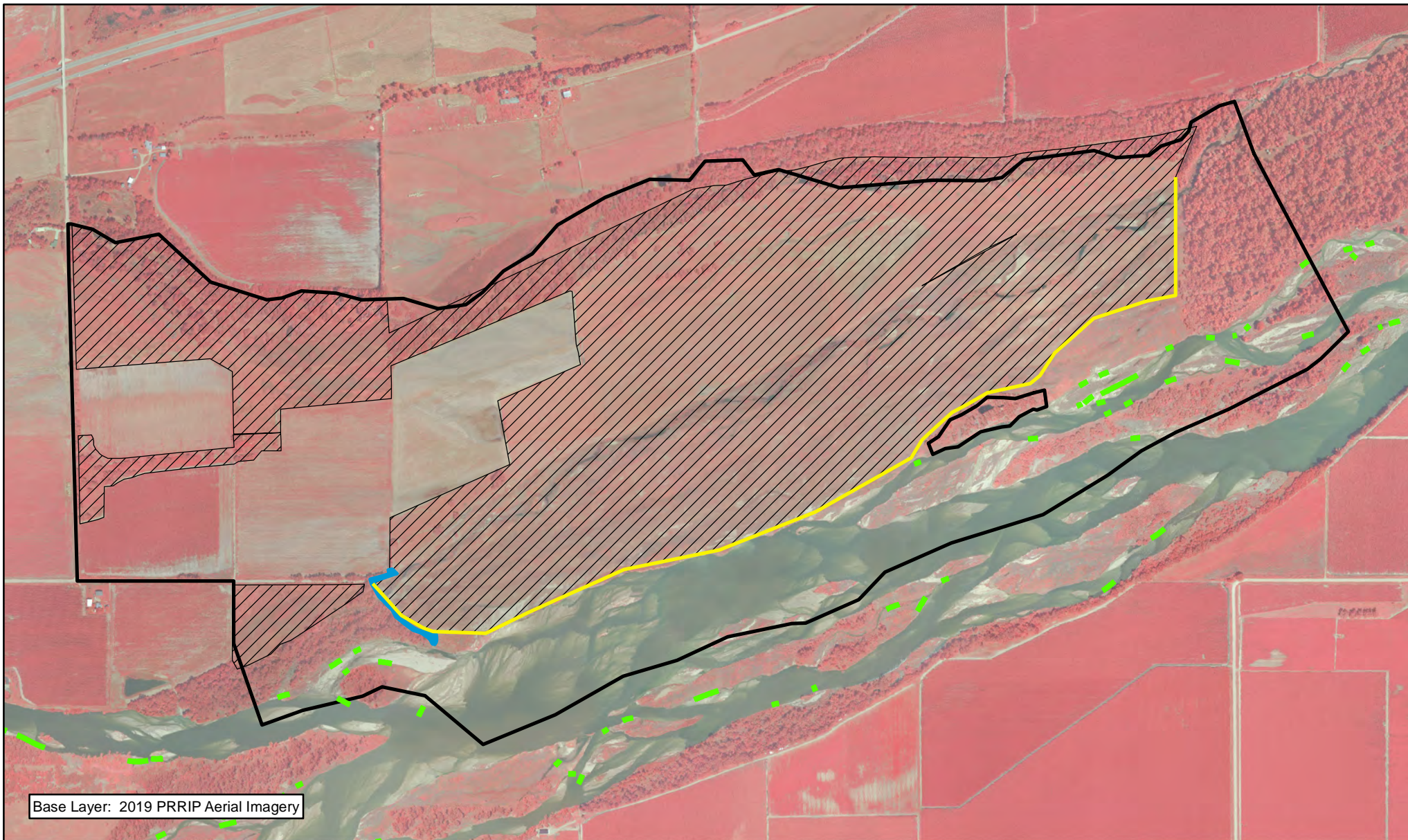
2019 Clark Island Complex Budget Summary

2019 Expenditures by Program Budget Line Item





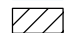
Priority Area	Item	Budget Line Item	Estimated Expenditure	2019 Expenditure
Adaptive Management	Off-channel Tern & Plover Nesting Habitat Construction	LP-2	\$1,800,000	\$0
Species Habitat	Improve Target Species Sand and Water Habitat	LP-2	\$25,000	\$0
Species Habitat	Whooping Crane Wet Meadow/ Grassland Habitat	LP-2	\$15,000	\$0
Subtotal			\$1,840,000	\$0
Operations and Maintenance	Property Maintenance and Agricultural Operations	LP-4	\$16,000	\$11,043
Total			\$1,856,000	\$11,043

2019 Revenues

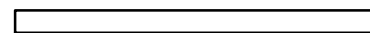
Tract	Item	Estimated Income	2019 Income
Tract 2018001	Grazing Income	\$7,150	\$13,150
Tract 2018001	Cropland Cash Rent Income	\$23,120	\$23,210
Total		\$30,270	\$36,360



Legend

-  County
-  Barbwire Fence Construction
-  PVWMA Phrag Control
-  Road Maintenance
-  Noxious Weed Control



 Miles
0.4

CLARK ISLAND COMPLEX FY 2019 ACTIVITIES

Date: 1/28/2020
By: TRT

Figure 14

2019 Shoemaker Island Complex Annual Work Plan Report

Platte River Recovery Implementation Program

For More Information Contact: Jason Farnsworth, farnsworthj@headwaterscorp.com (308) 237-5728

General Priorities

- * ***Good Neighbor Policy*** - Conduct all actions in accordance with Program's good neighbor policy.

Adaptive Management Priorities

- * ***Species Monitoring*** – Monitor whooping crane use of palustrine wetlands and in-channel roosting habitat.

Species Habitat Priorities

- * ***Maintain Target Species Sand and Water Habitat*** – Control in-channel vegetation to maintain suitable unobstructed view widths for whooping cranes.
- * ***Protecting Other Species of Concern*** – Identify presence of and determine methods to protect other species of concern during implementation of land-related activities.

Operations and Maintenance Priorities

- * ***Basic Property Maintenance Obligations and Needs*** – Fulfill basic property ownership obligations and needs on Tract 2010004 including fence and road maintenance and noxious weed control.
- * ***Agricultural Operations*** – Oversight of grazing/ haying leases on Tract 2010004

NOTE: The budget section of this work plan only contains information for work items that are specific to these tracts. As such, tract-specific research and monitoring actions are presented but system-scale actions like target species and geomorphology/vegetation monitoring are not.

Priority Area: General**Item(s):** *Complex Land Interest and Complex-Level Planning*

No.	Management Activities	Budget Line Item	Completed	Cost (Estimated)	Actual Cost
SI 1	Coordination of Program land actions with neighboring landowners	N/A	Yes	N/A	N/A

Priority Area: Species Habitat**Item(s):** *Improve Target Species Sand and Water Habitat*

No.	Management Activities	Budget Line Item	Completed	Cost (Estimated)	Actual Cost
SI 2	Disking if necessary to provide in-channel vegetation control (~75 ac)	LP-2	No	\$20,850	\$0

Priority Area: Species Habitat**Item(s):** *Whooping Crane Grassland / Wet Meadow Habitat*

No.	Management Activities	Budget Line Item	Completed	Cost (Estimated)	Actual Cost
SI 3	Tract 2010004-South Prescribe burn (514 ac)	LP-2	Yes	\$22,425	\$25,089

Priority Area: Species Habitat**Item(s):** *Other Species of Concern*

No.	Management Activities	Budget Line Item	Completed	Cost (Estimated)	Actual Cost
SI 4	Habitat and species surveys on properties where work will occur	N/A	Yes	N/A	N/A
SI 5	Coordination with USFWS and NGPC to identify and mitigate potential impacts associated with land activities	N/A	Yes	N/A	N/A

Priority Area: Operations and Maintenance**Item(s):** *Basic Property Maintenance Obligations and Needs*

No.	Management Activities	Budget Line Item	Completed	Cost (Estimated)	Actual Cost
SI 6	Fence and road maintenance	LP-4	Yes	\$1,500	\$11,380
SI 7	Noxious weed control	LP-4	Yes	\$3,500	\$2,163
SI 8	Mowing	LP-4	No	\$1,500	\$0

Priority Area: Operations and Maintenance**Item(s):** *Agricultural Operations*

No.	Management Activities	Budget Line Item	Completed	Cost (Estimated)	Actual Cost
SI 9	Tract 2010004 grazing & haying lease oversight	N/A	Yes	N/A	

Priority Area: Unplanned Expenses

Tract No.	Management Activities	Item(s):	Budget Line Item	Actual Cost
2010004	Replaced Lorentz controller, float switch on solar unit	Basic Property Maint	LP-4	\$1,193
2010004	Electricity	Basic Property Maint	LP-4	\$184

Property Identification Key:

2010004 – PRRIP Binfield Tract

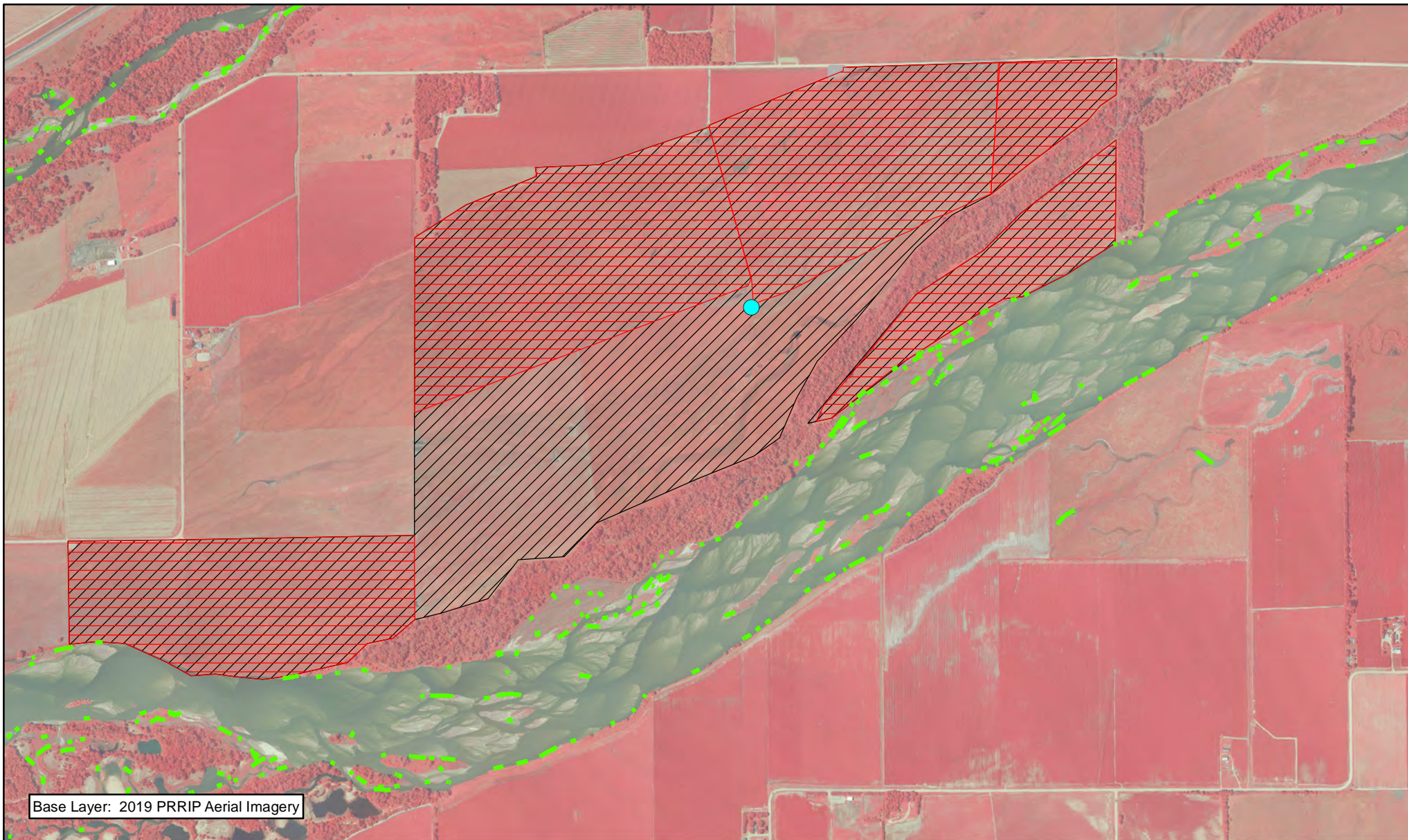
2019 Shoemaker Island Complex Budget Summary

2019 Expenditures by Program Budget Line Item



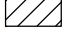



Priority Area	Item	Budget Line Item	Estimated Expenditure	2019 Expenditure
Species Habitat	Improve Target Species Sand and Water Habitat	LP-2	\$20,850	\$0
Species Habitat	Whooping Crane Wet Meadow/ Grassland Habitat	LP-2	\$22,425	\$25,089
Subtotal			\$43,275	\$25,089
Operations and Maintenance	Property Maintenance and Agricultural Operations	LP-4	\$6,500	\$14,920
Total			\$49,775	\$40,009

2019 Revenues

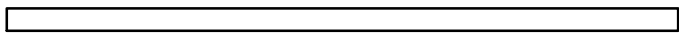
Tract	Item	Estimated Income	2019 Income
Tract 2010004	Grazing & Haying Income	\$46,025	\$33,815
Tract 2011001	Haying Income	\$1,010	\$1,581
Total		\$47,035	\$35,396



Legend

-  County
-  PVWMA Phrag Control
-  Noxious Weed Control
-  Prescribed Fire
-  Parking Lot Construction
-  Solar Livestock Water Repair



 Miles
1

SHOEMAKER ISLAND COMPLEX FY 2019 ACTIVITIES

Date: 1/28/2020
By: TRT

Figure 15

2019 Water Properties Annual Work Plan Report

Platte River Recovery Implementation Program

For More Information Contact: Jason Farnsworth, farnsworthj@headwaterscorp.com (308) 237-5728

General Priorities

- * **Good Neighbor Policy** - Conduct all actions in accordance with Program's good neighbor policy.

Operations and Maintenance Priorities

- * **Basic Property Maintenance Obligations and Needs** – Fulfill basic property ownership obligations and needs on Tracts W2016001, W2016002, W2017001, & W2017002 including fence and road maintenance, irrigation management and noxious weed control.
- * **Agricultural Operations** – Oversight of grazing/ haying lease on Tract W2016001 and custom farming on Tract W2016002

Priority Area: General

Item(s): *Complex Land Interest and Complex-Level Planning*

No.	Management Activities	Budget Line Item	Completed	Cost (Estimated)	Actual Cost
WP 1	Coordination of Program land actions with neighboring landowners	Annual	Yes	N/A	N/A

Priority Area: Operations and Maintenance

Item(s): *Basic Property Maintenance Obligations and Needs*

No.	Management Activities	Budget Line Item	Completed	Cost (Estimated)	Actual Cost
WP 2	Fence and road maintenance	WP-4 (j)	No	\$7,000	\$0
WP 3	Noxious weed control	WP-4 (j)	Yes	\$15,000	\$301
WP 4	Mowing	WP-4 (j)	Yes	\$2,000	\$875
WP 5	Tract W2016002 Custom Farm Expense	WP-4 (j)	Yes	\$23,000	\$27,903

Priority Area: Operations and Maintenance**Item(s):** *Agricultural Operations*

No.	Management Activities	Budget Line Item	Completed	Cost (Estimated)	Actual Cost
WP 6	TractW 2016002 Lease Oversight	WP-4 (j)	Yes	N/A	N/A

Priority Area: *Unplanned Expenses*

Tract No.	Management Activities	Item(s):	Budget Line Item	Actual Cost
W2017001	Demolition & Removal of structures at homesite	Basic Property Main	WP-4 (j)	\$32,225
W2016002	Electricity	Basic Property Main	WP-4 (j)	\$184
W2017001	Electricity	Basic Property Main	WP-4 (j)	\$184

Property Identification Key:

W201602 – PRRIP Lindstrum Tract

W201701 – PRRIP Edlund Tract

W201702 - PRRIP Albrecht Tract

W201703 - PRRIP Lakeside Tract

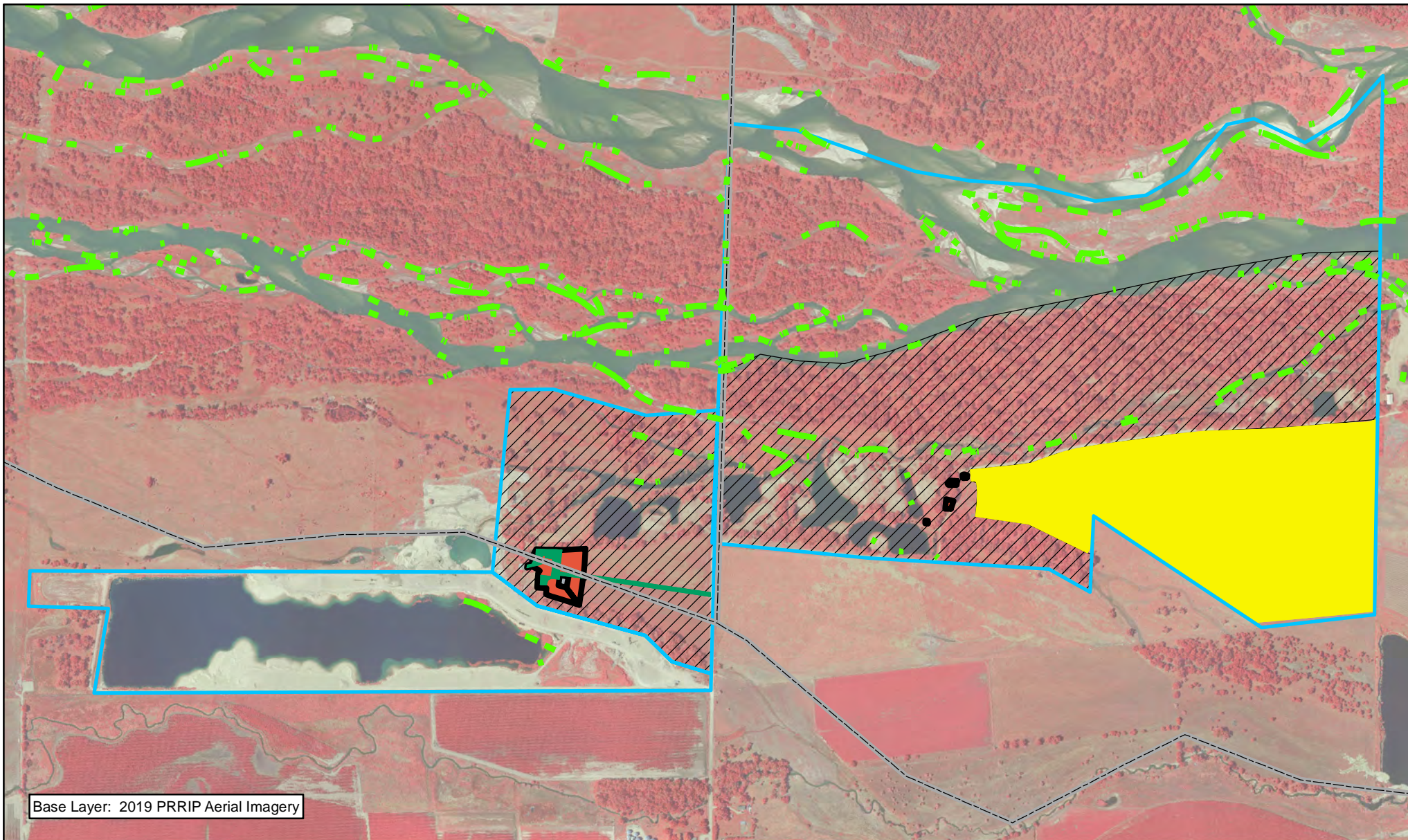
2019 Water Properties Budget Summary

2019 Expenditures by Program Budget Line Item







Priority Area	Item	Budget Line Item	Estimated Expenditure	2019 Expenditure
Operations and Maintenance	Property Maintenance and Agricultural Operations	WP-4j	\$47,000	\$61,672
		Total	\$47,000	\$61,672

2019 Revenues


Tract	Item	Estimated Income	2019 Income
Tract W201602	Crop Income	\$5,760	\$27,024
Tract W201602	Crop FSA Income	\$0	\$3,294
Tract W201701	N/A	\$0	\$0
Tract W201702	N/A	\$0	\$0
	Total	\$5,760	\$30,318



Legend

- | | |
|--|--|
|  County |  Shredding/Mowing |
|  PVWMA Phrag Control |  Building Removal |
|  Noxious Weed Control |  Crop-corn |



 Miles
0.45

WATER TRACTS FY 2019 ACTIVITIES

Date: 1/28/2020
By: TRT

Figure 16



PLATTE RIVER
RECOVERY IMPLEMENTATION PROGRAM

Page Intentionally Left Blank