

A photograph of a rural landscape. In the foreground, a field of tall, dry, golden-brown grass is visible. A deer stands on the left side of the field, facing right. To the right of the deer, four white swans are standing in a line, facing right. The background consists of a line of bare, leafless trees under a pale blue sky. The text "Collaborative Research Group" is written in large, white, sans-serif font across the upper middle of the image. Below it, the text "– Diurnal Selection" is written in a slightly smaller, white, sans-serif font.

Collaborative Research Group – Diurnal Selection

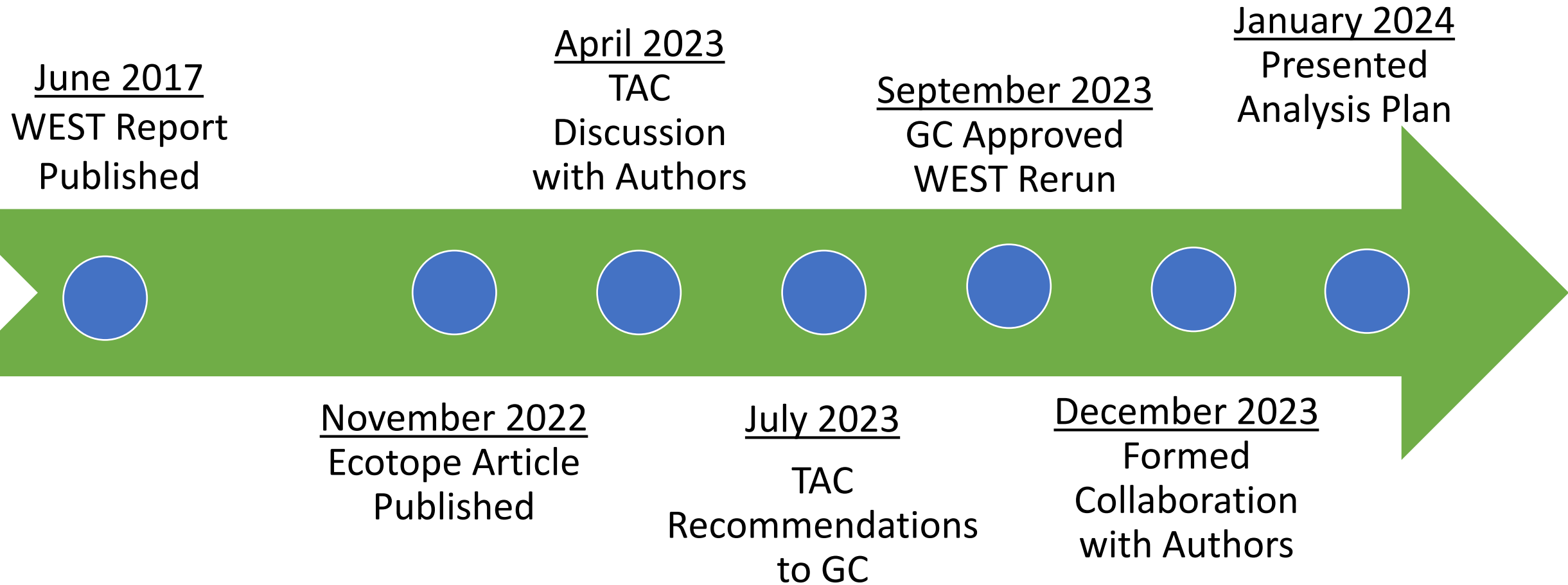
Patrick Farrell

Dave Baasch

Matt Rabbe

May 2024 TAC Meeting

Onboarding Process

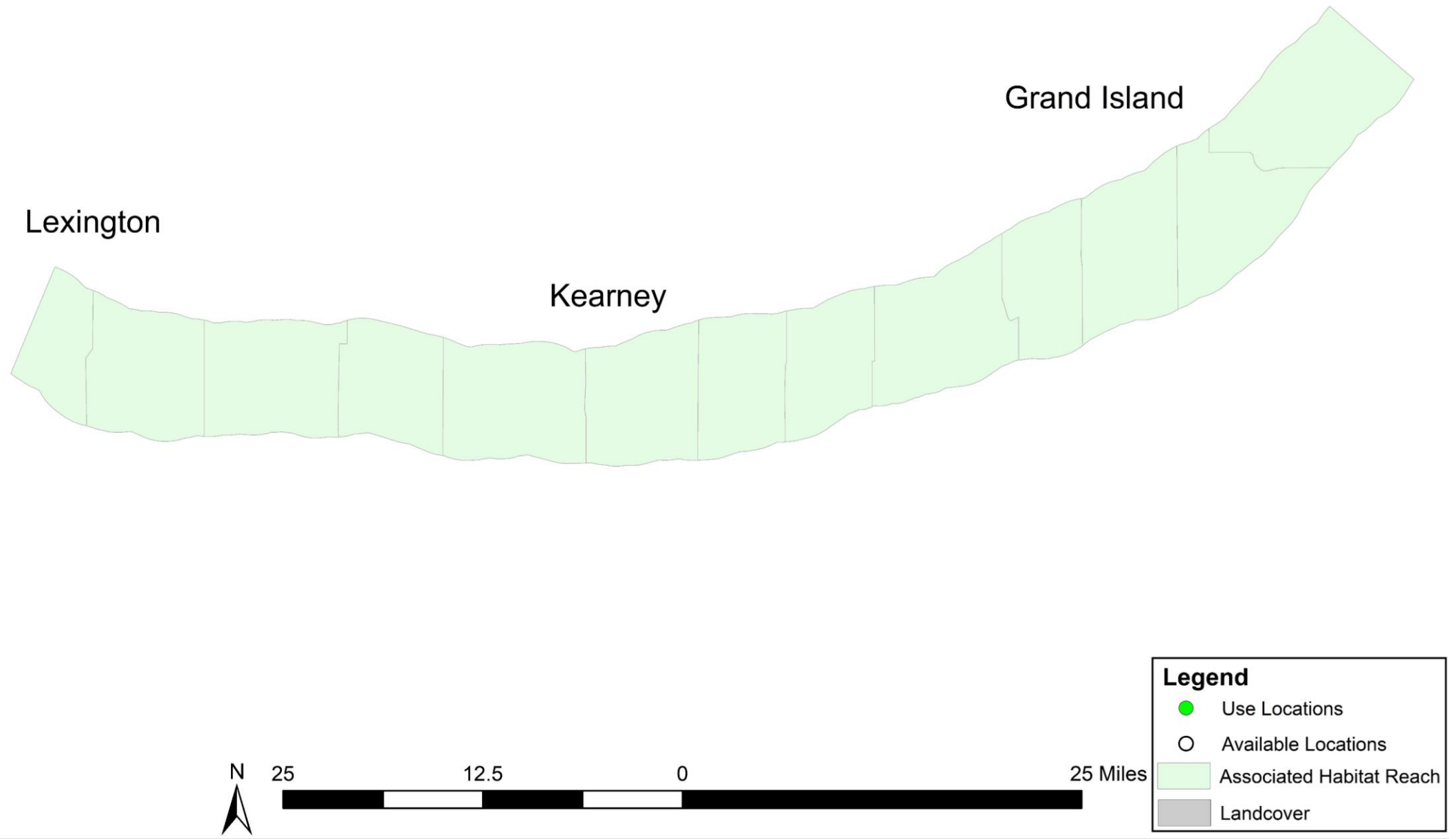


Collaboration – Bringing Methods Closer Together

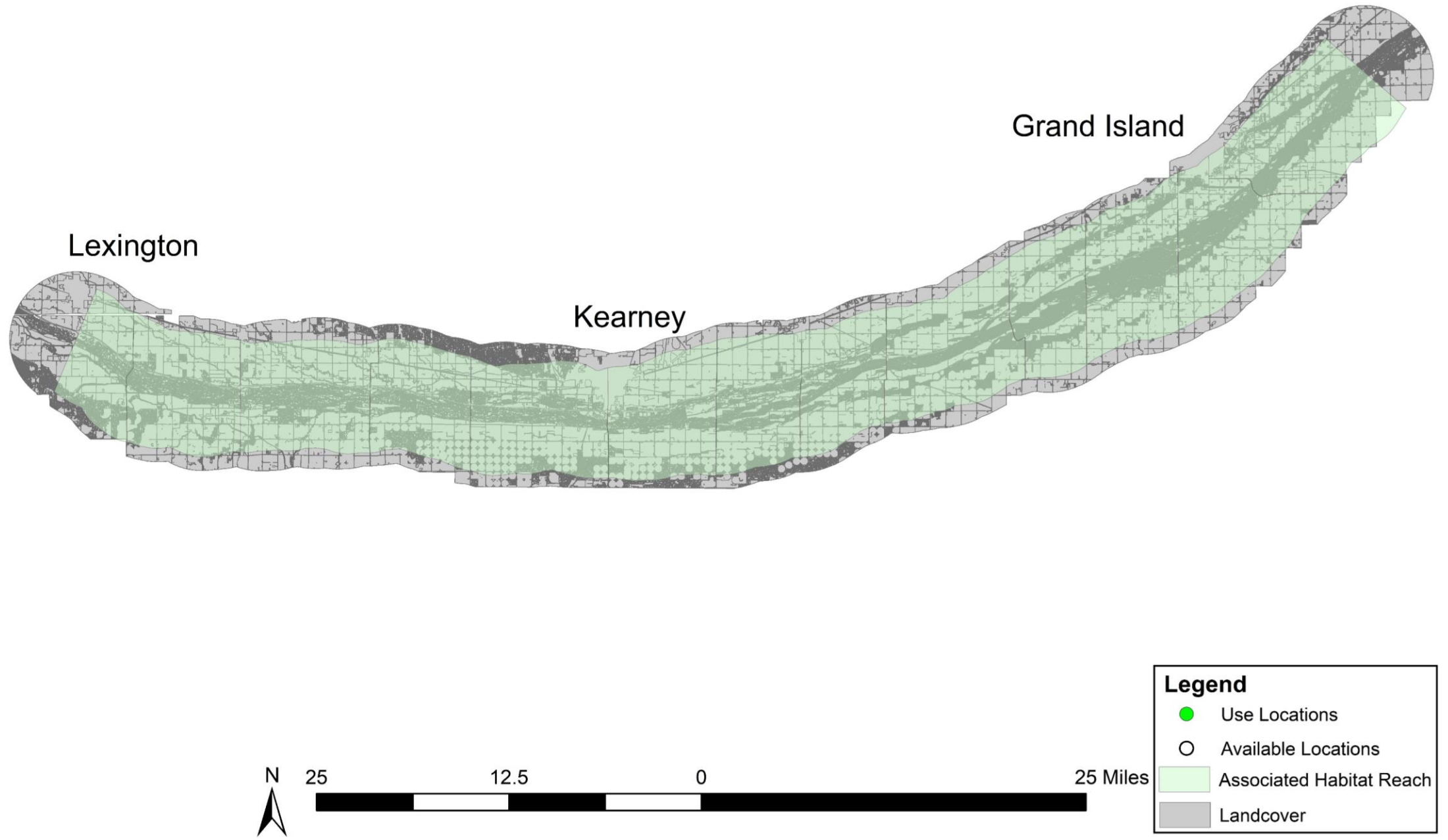
WEST Analysis Update

- 1 - with the Ecotope landcover.
- 2 - without riverine locations (original analysis landcover).
- 3 - without riverine locations, using Ecotope landcover.

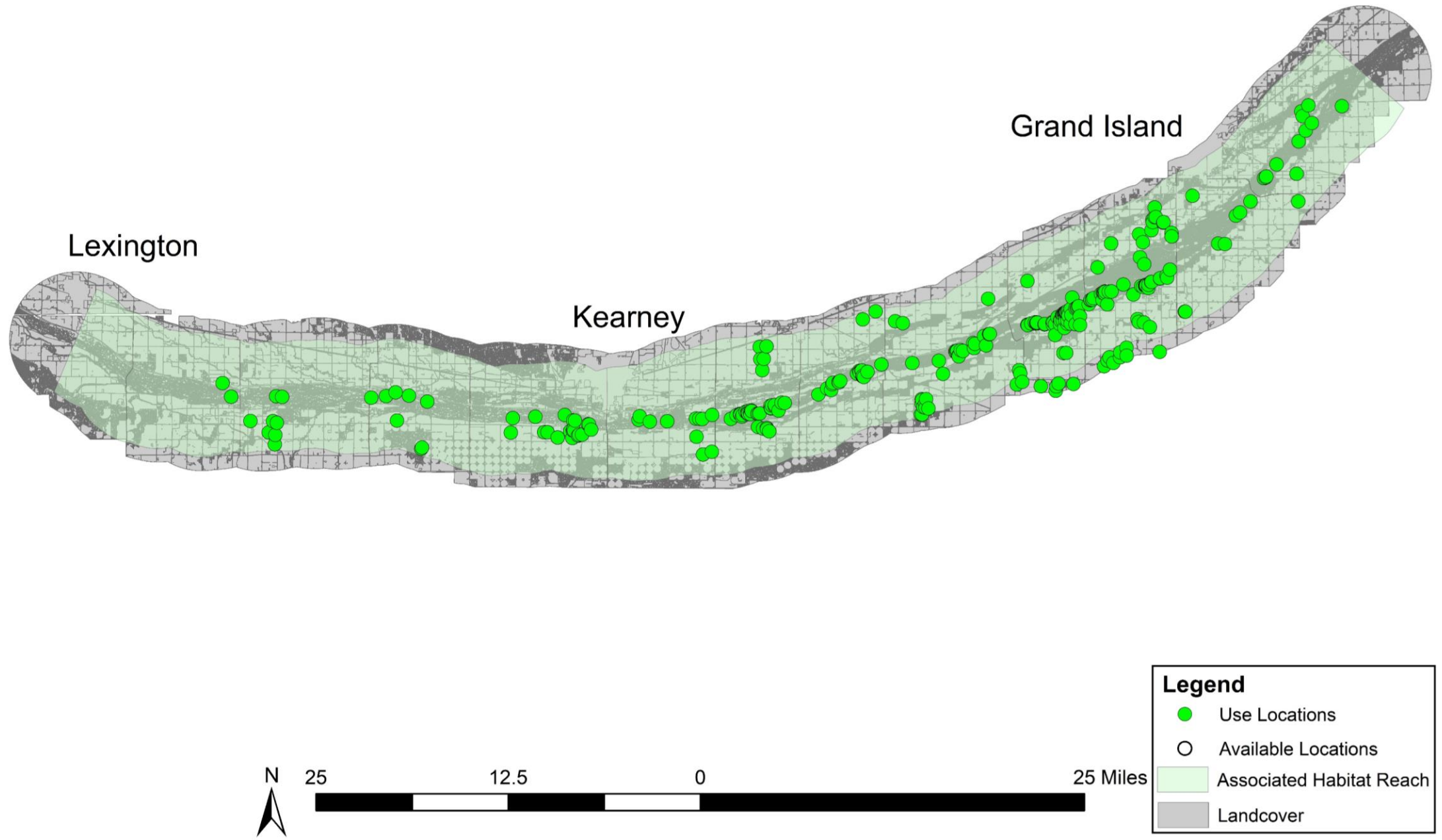
WEST Report – Original Methods



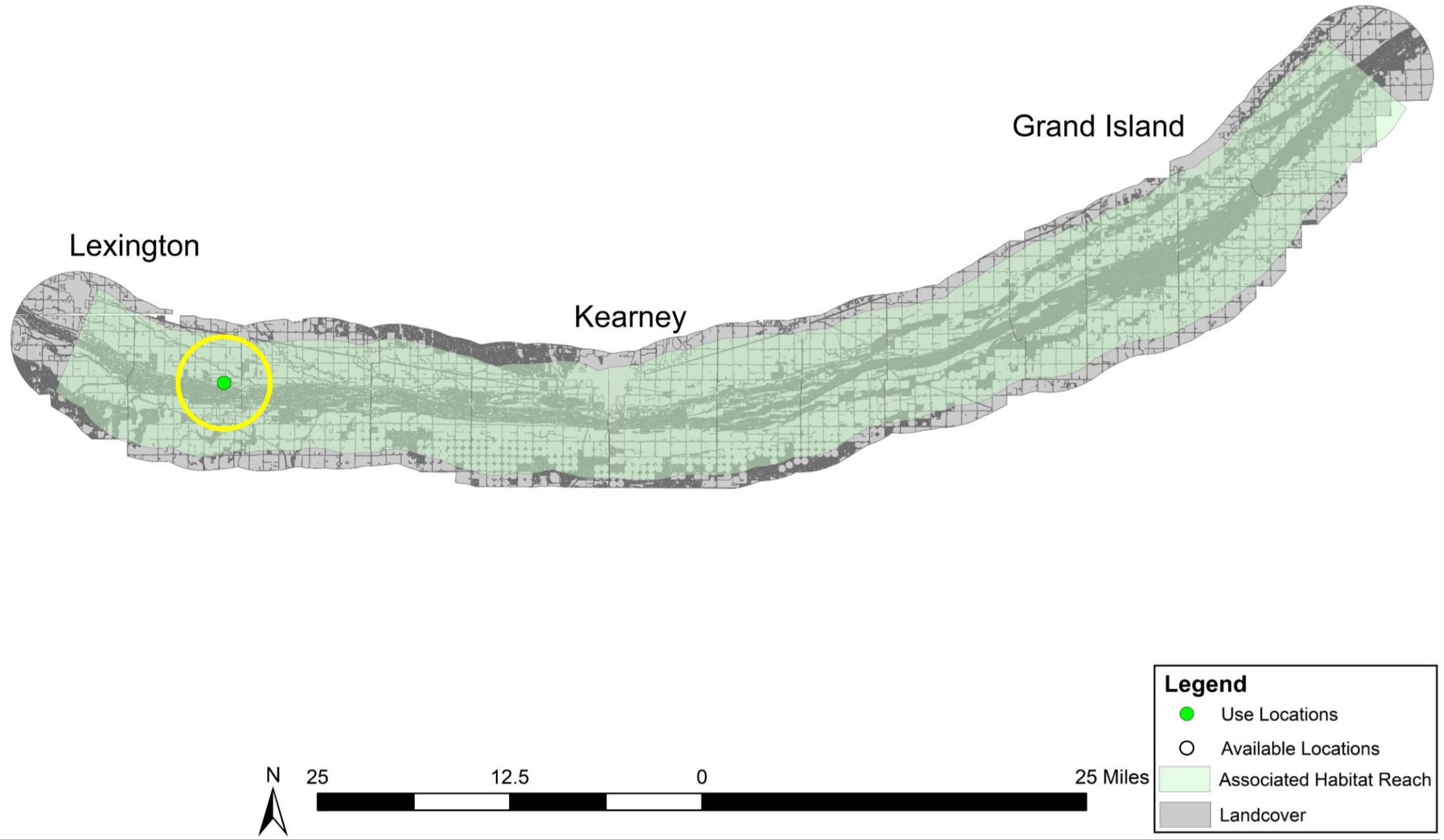
WEST Report – Original Methods



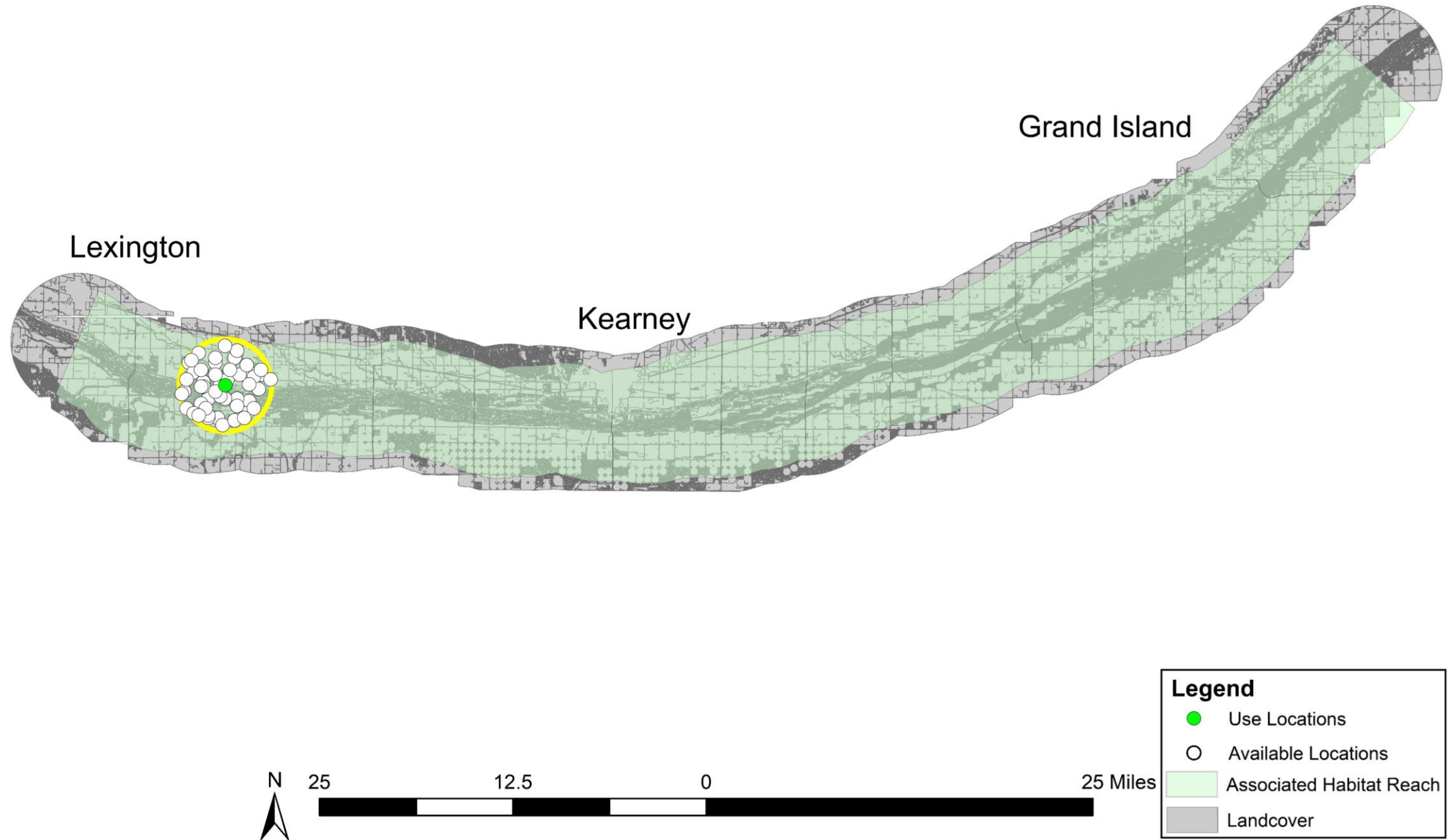
WEST Report – Original Methods



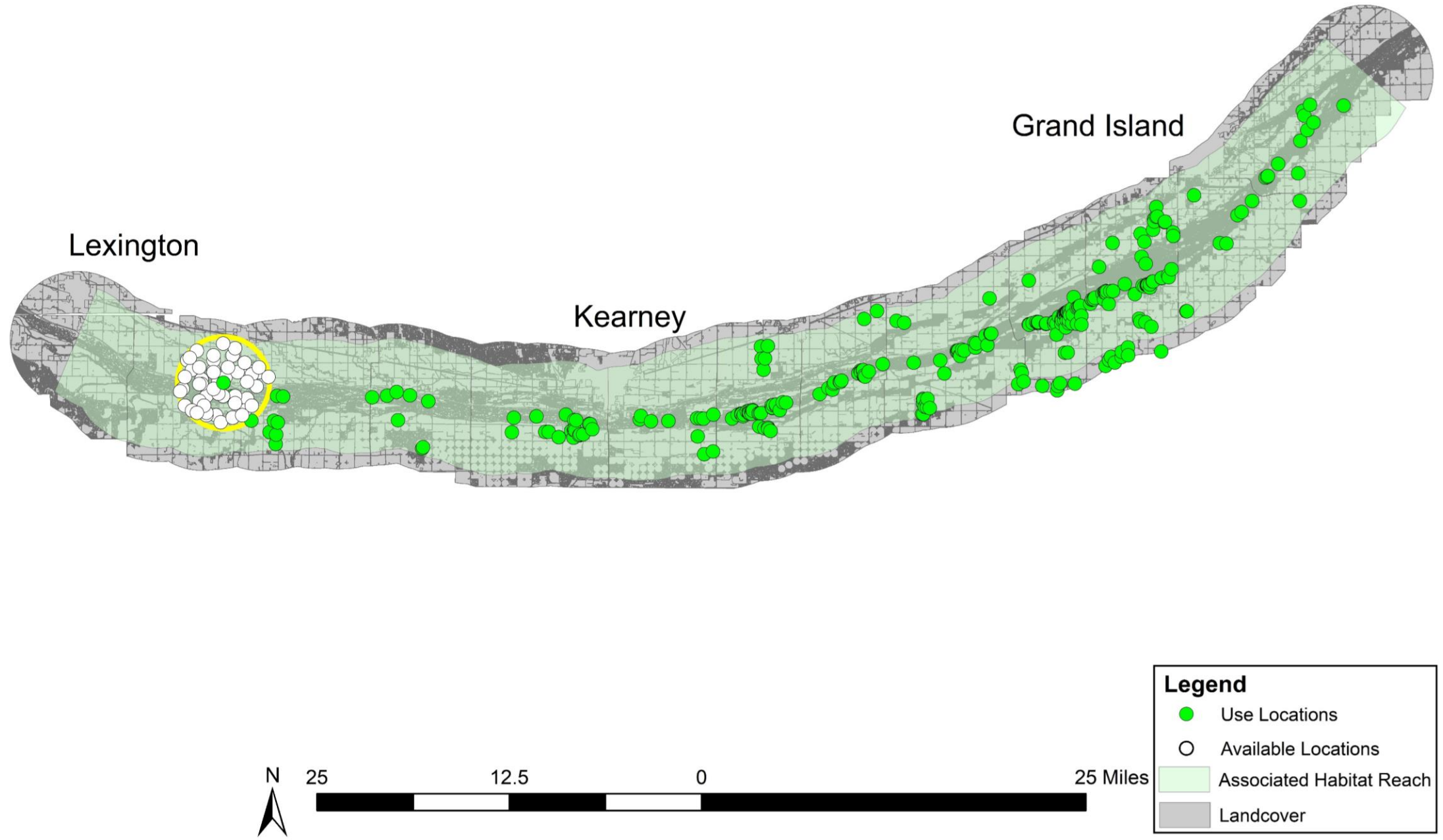
WEST Report – Original Methods



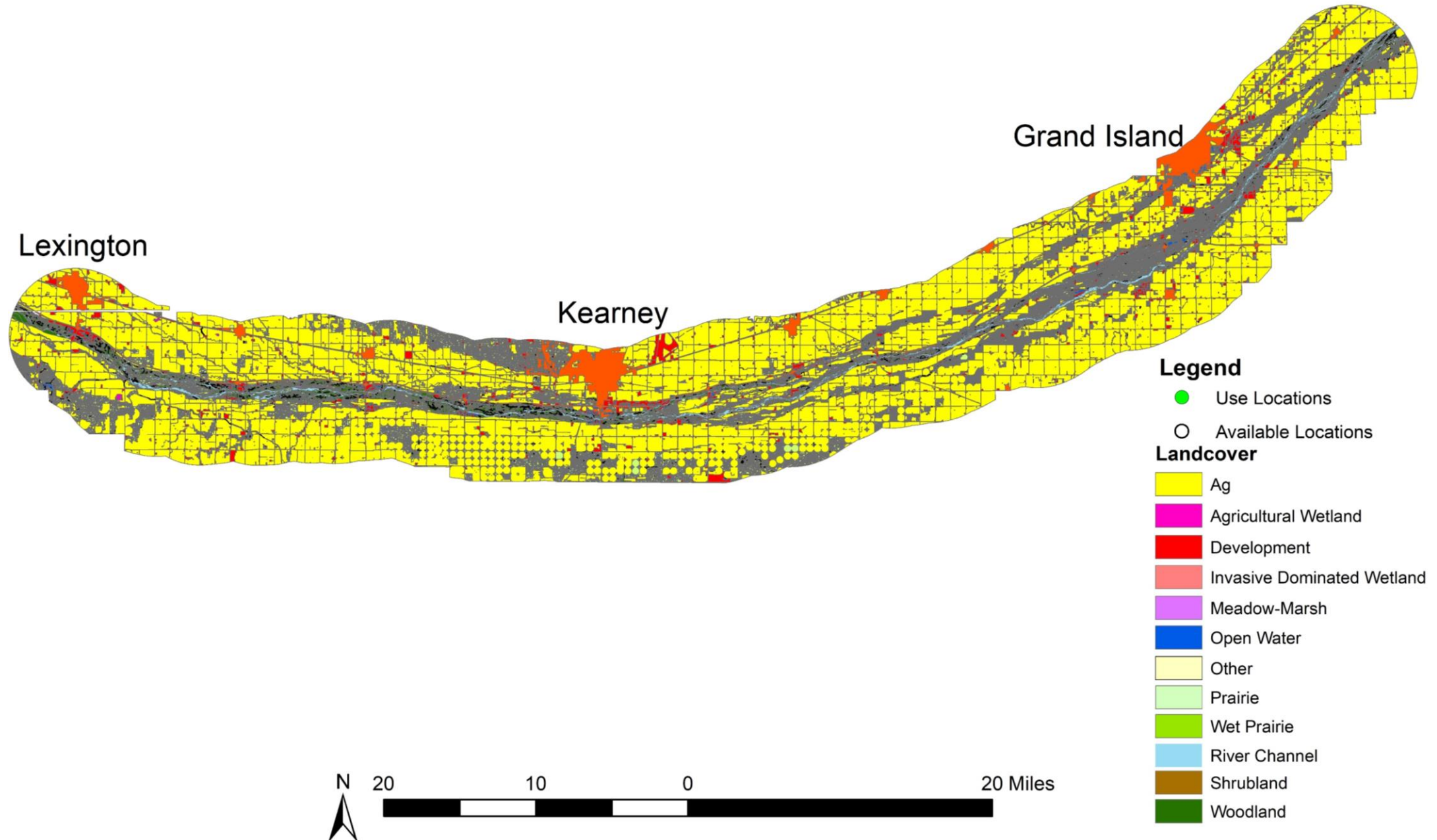
WEST Report – Original Methods



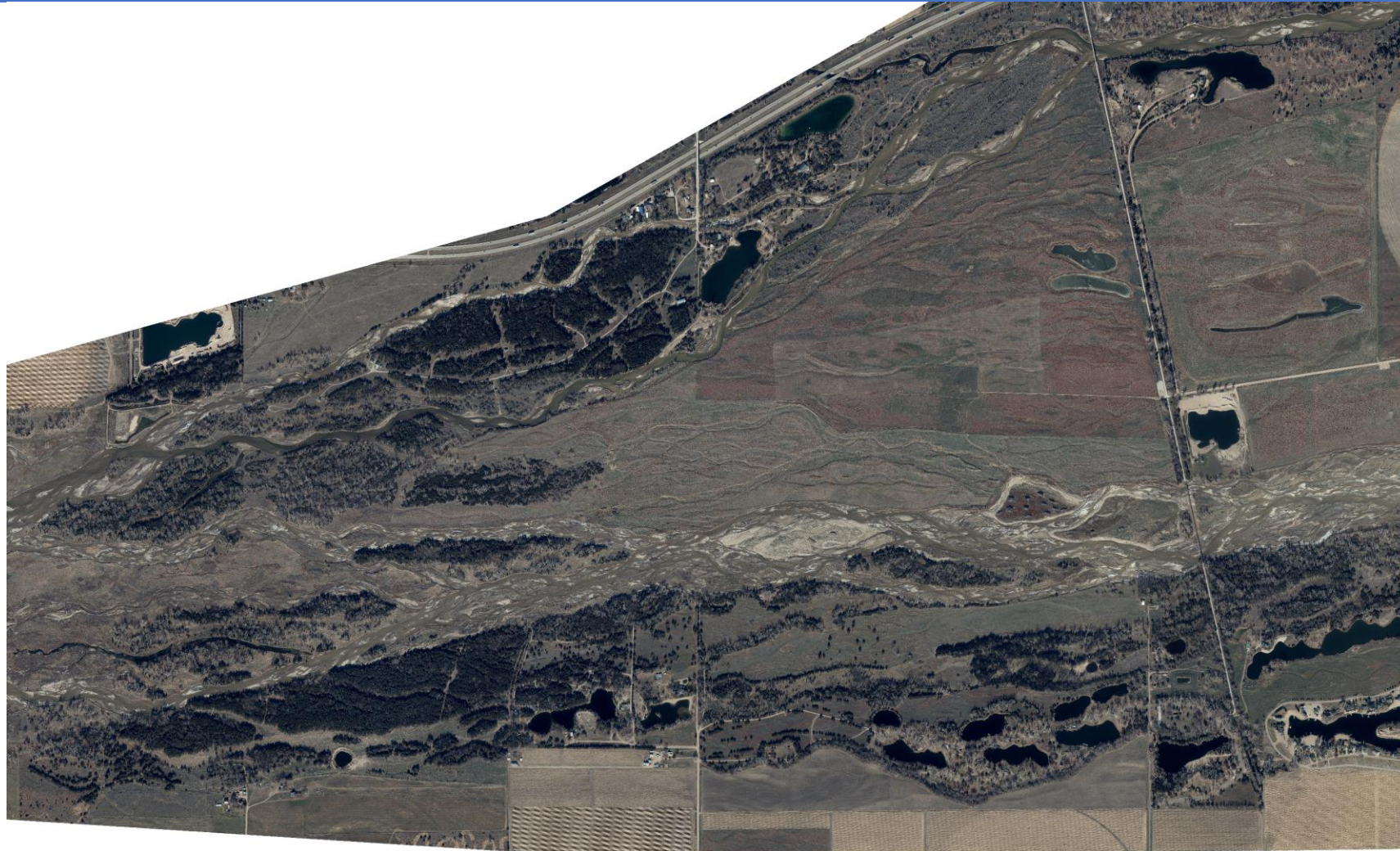
WEST Report – Original Methods



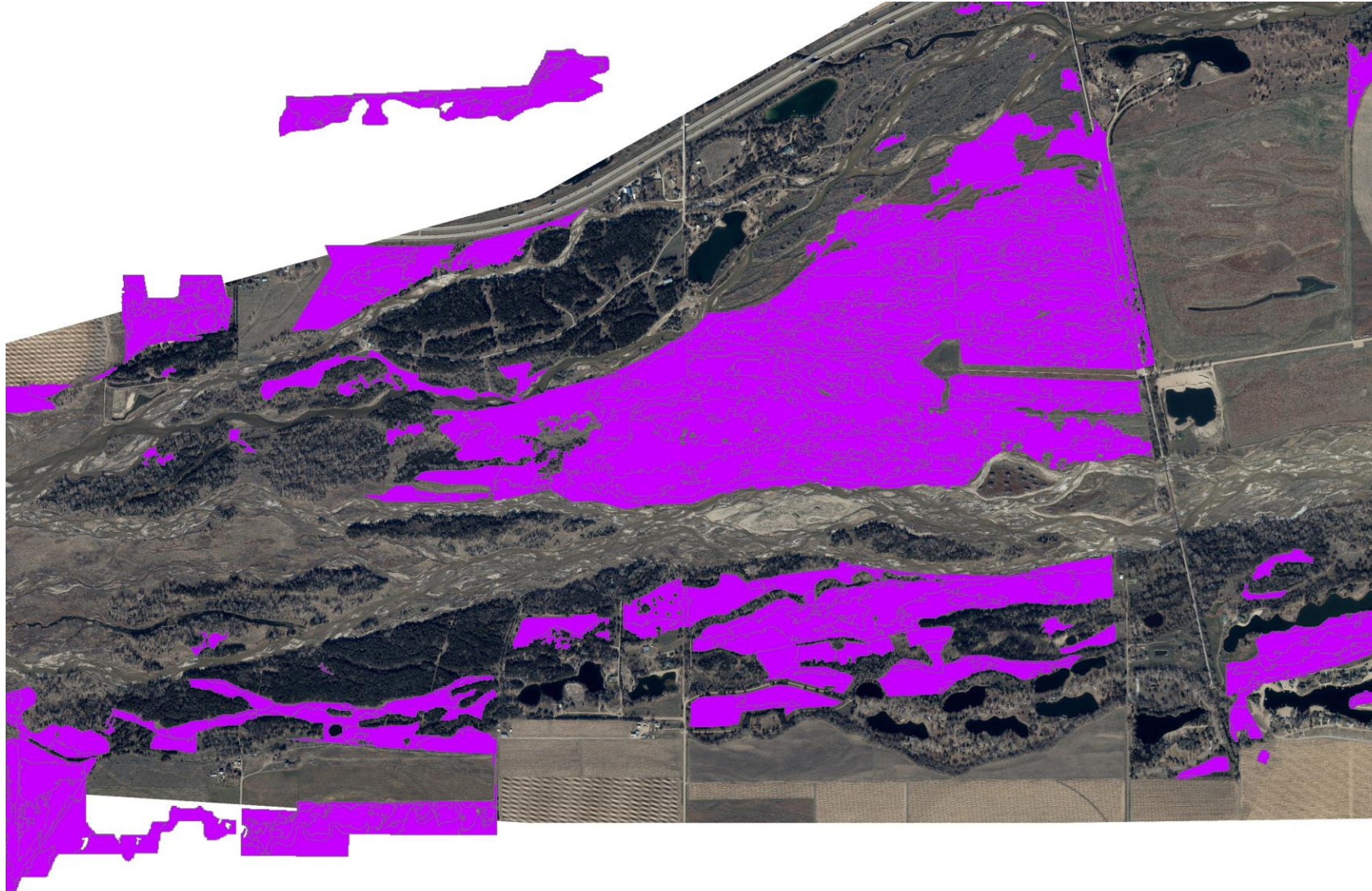
WEST Redo: with the Ecotope landcover



WEST Report – Wet Meadow Coverage



WEST Report – Wet Meadow Coverage



0.75

0.375

0

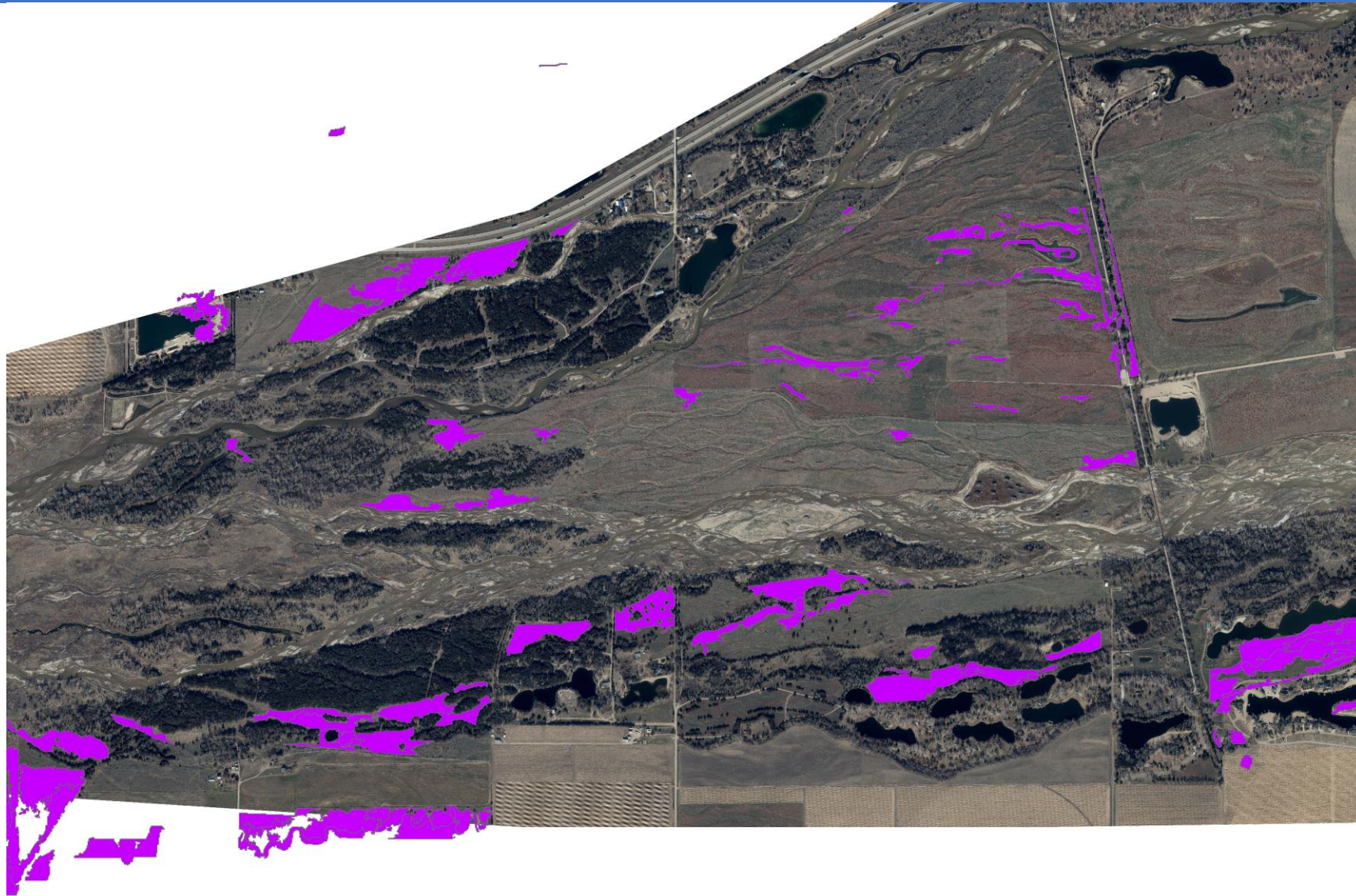
0.75 Miles



Legend

 Wet Meadow

WEST Redo: with the Ecotope Landcover (Meadow-Marsh)



0.75

0.375

0

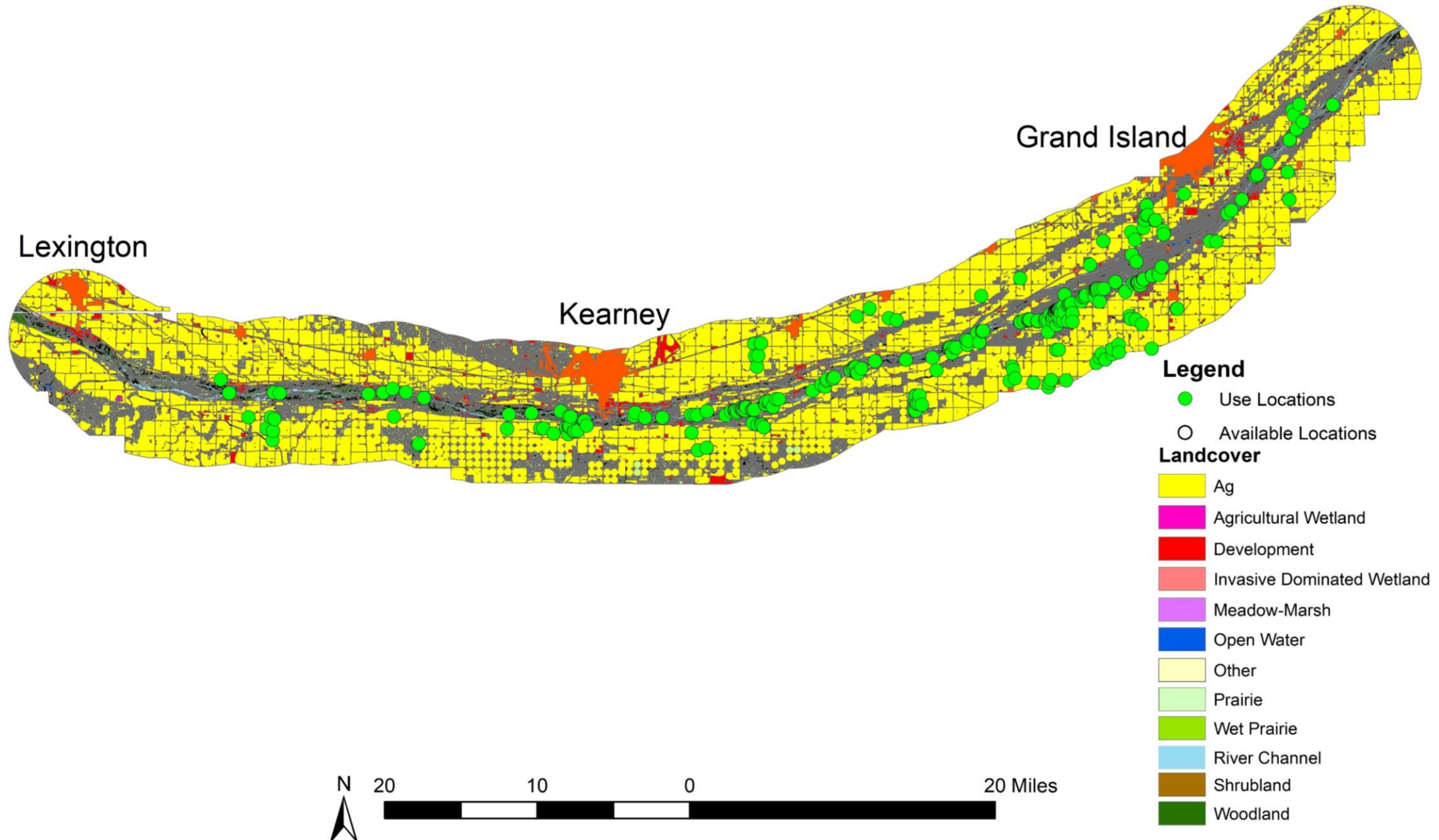
0.75 Miles



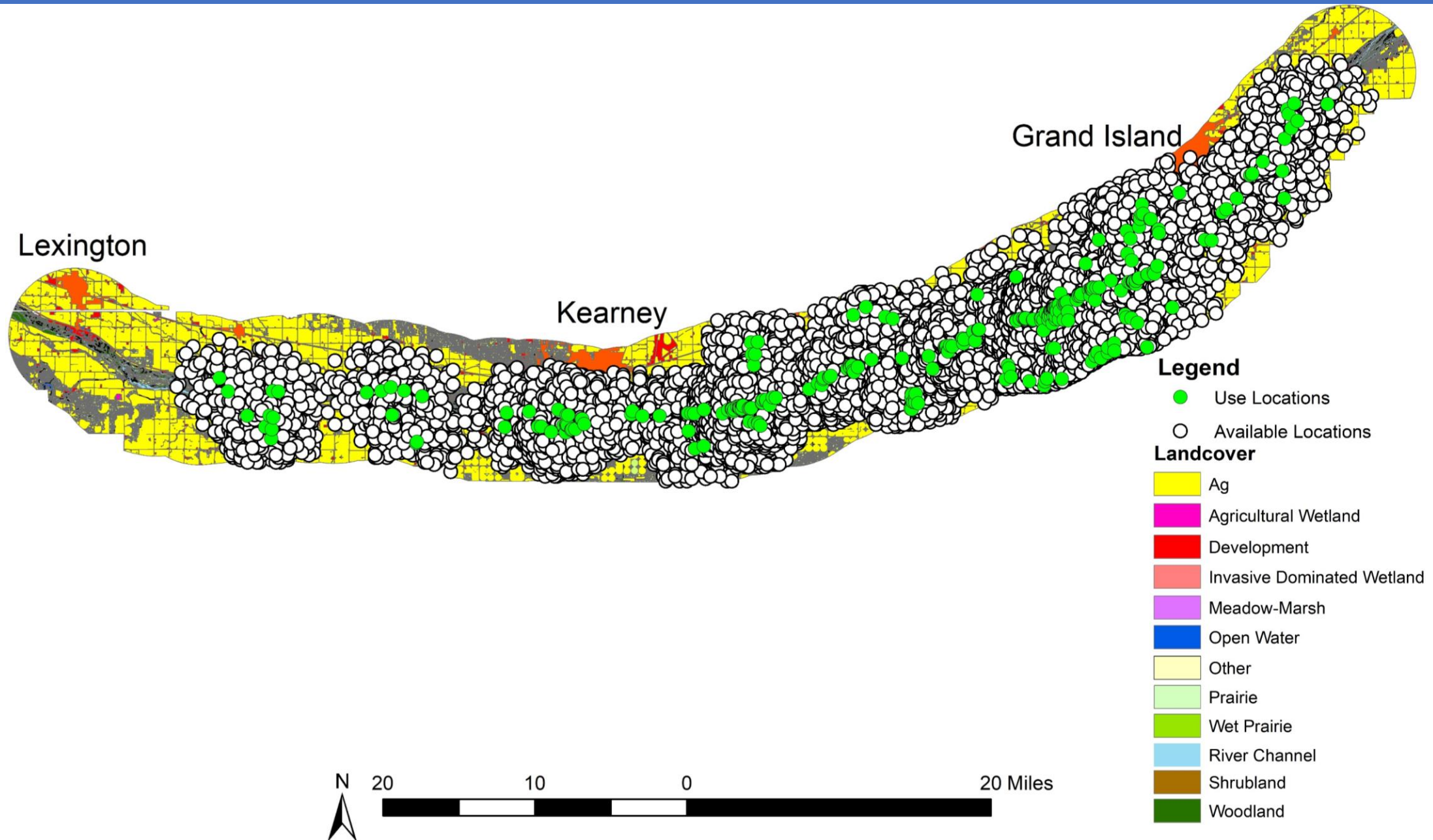
Legend

Meadow-Marsh

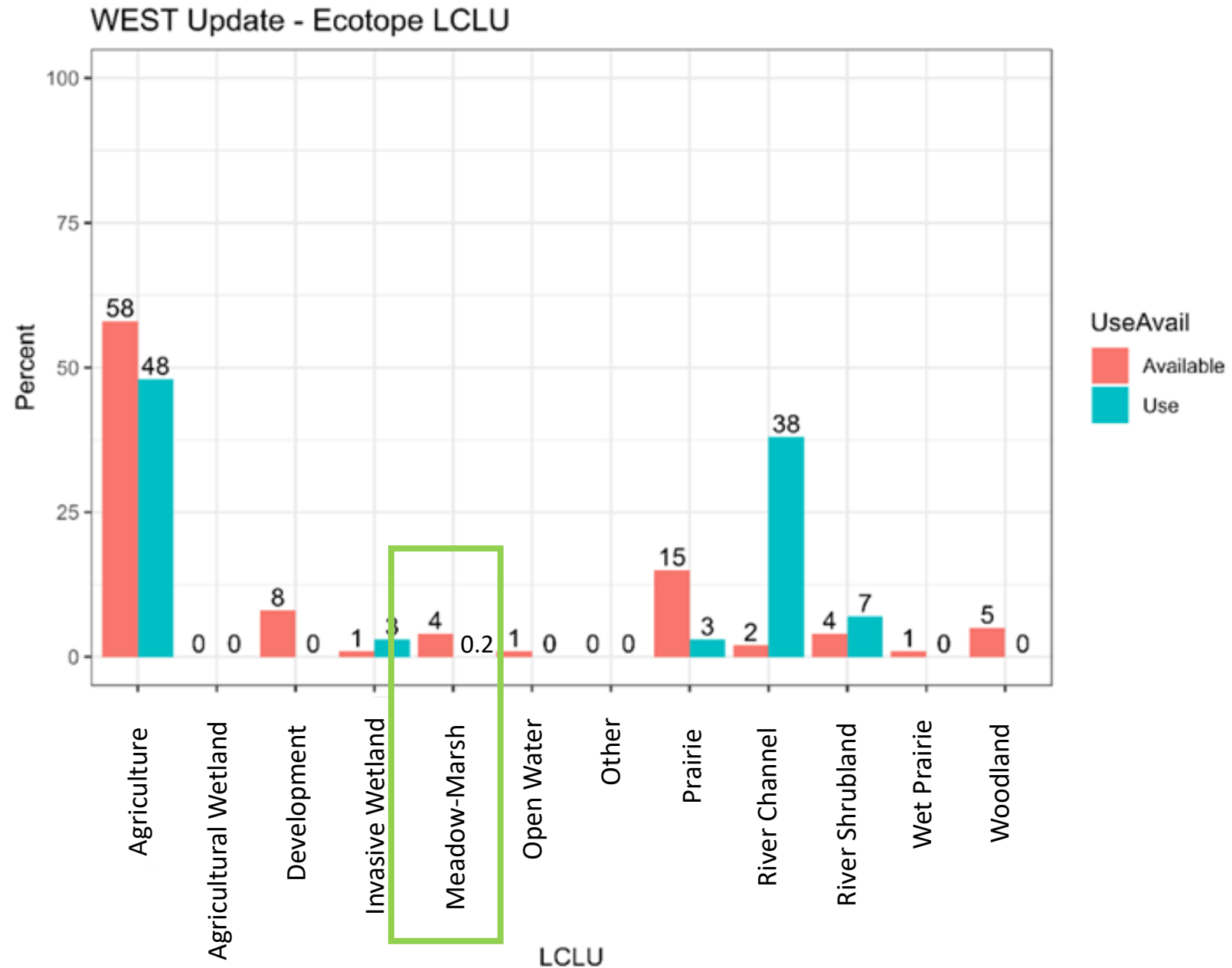
WEST Redo: with the Ecotope Landcover



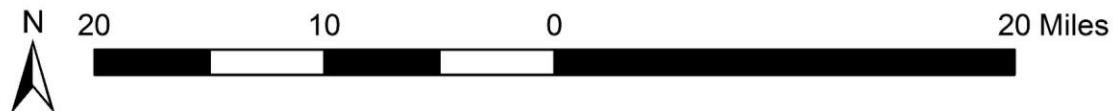
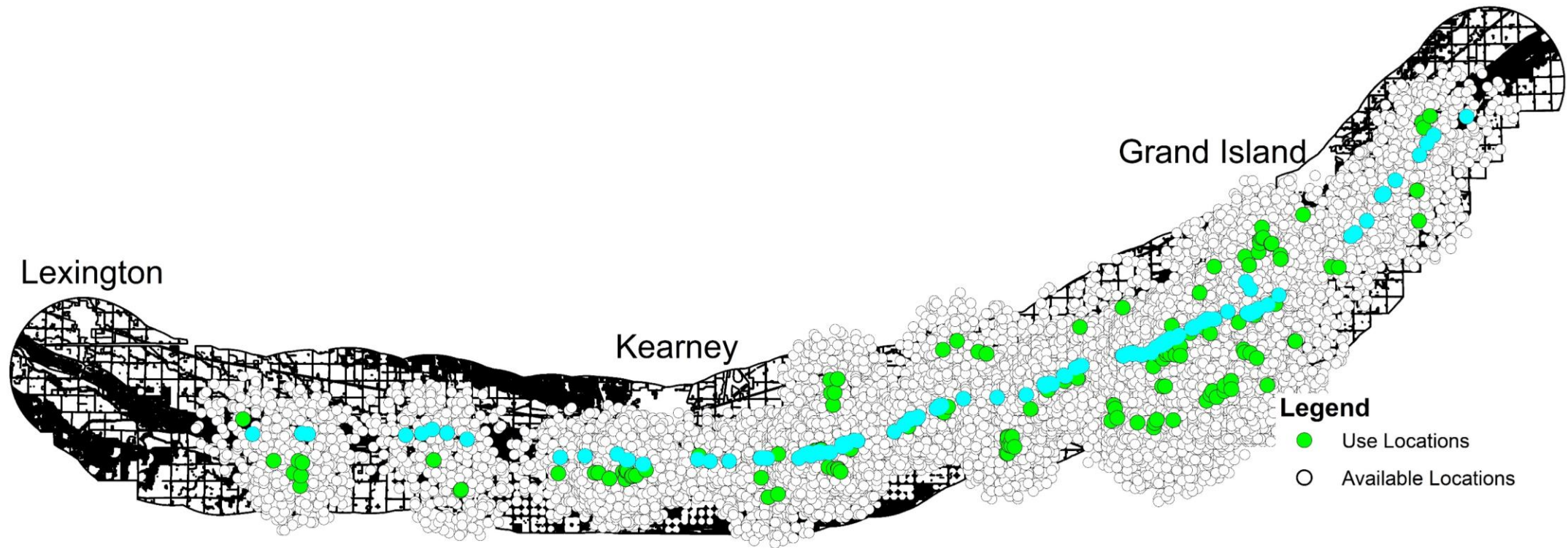
WEST Redo: with the Ecotope landcover



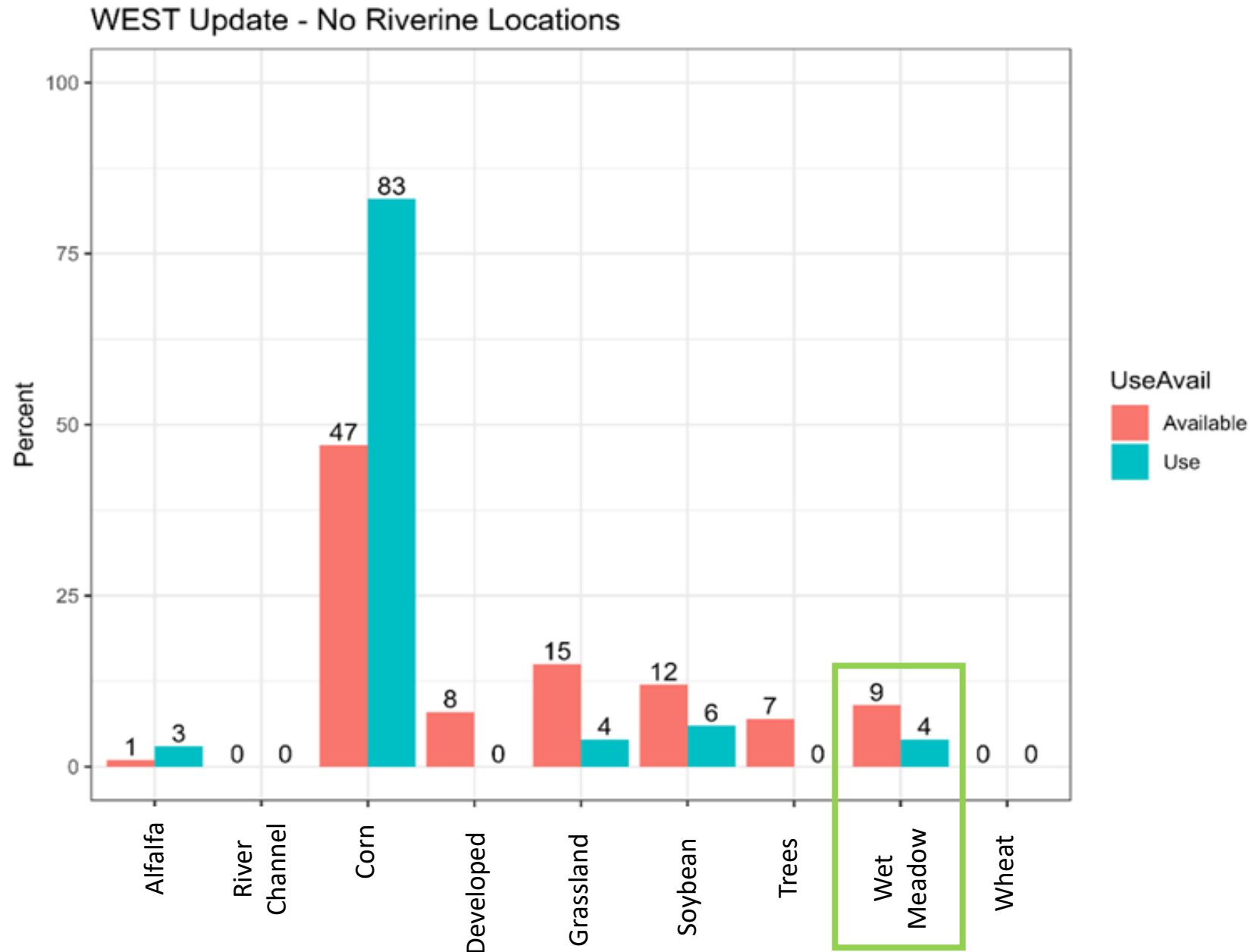
WEST Redo: with the Ecotope Landcover



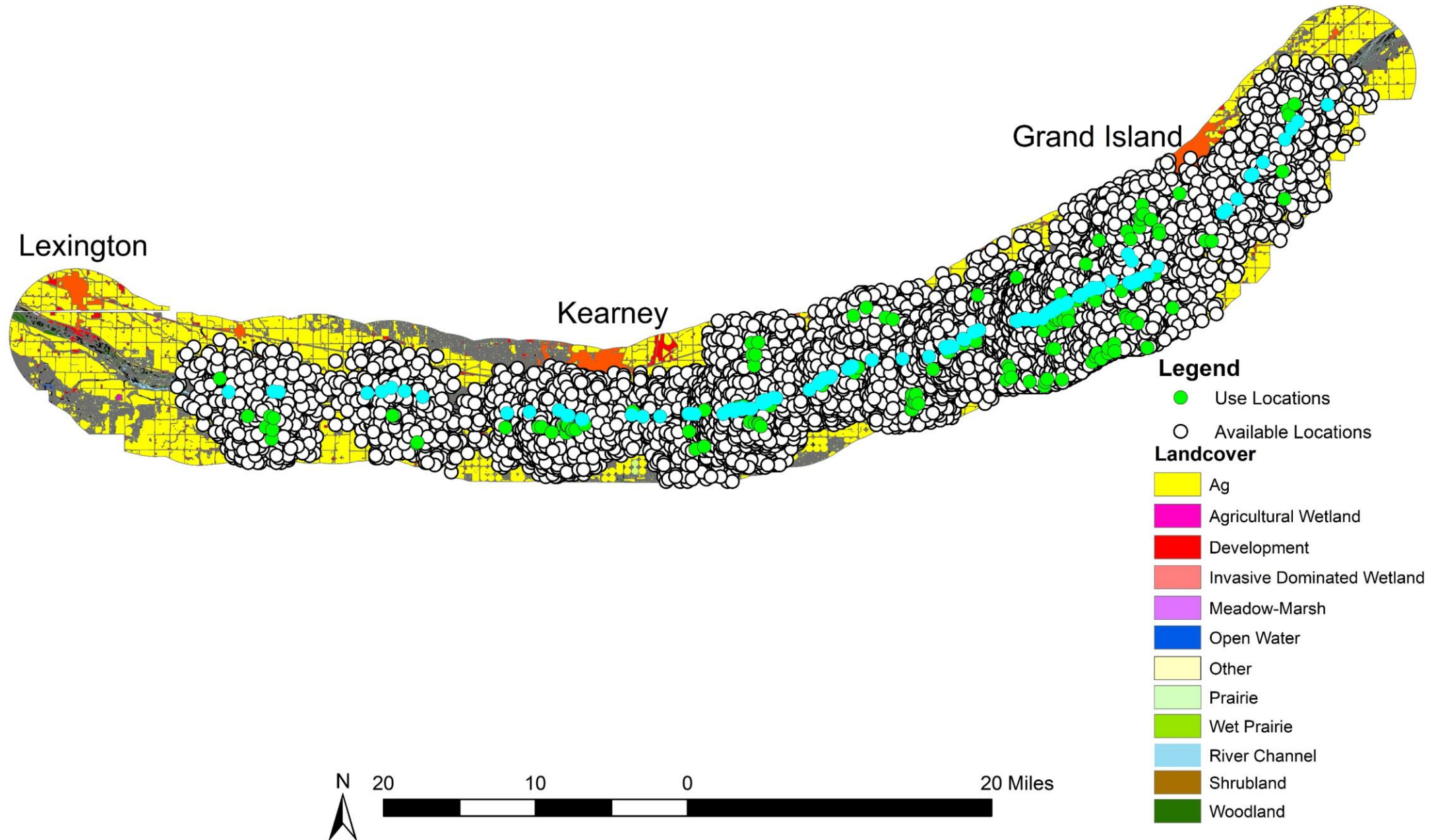
WEST Redo: without Riverine Use Locations (Using Original Landcover)



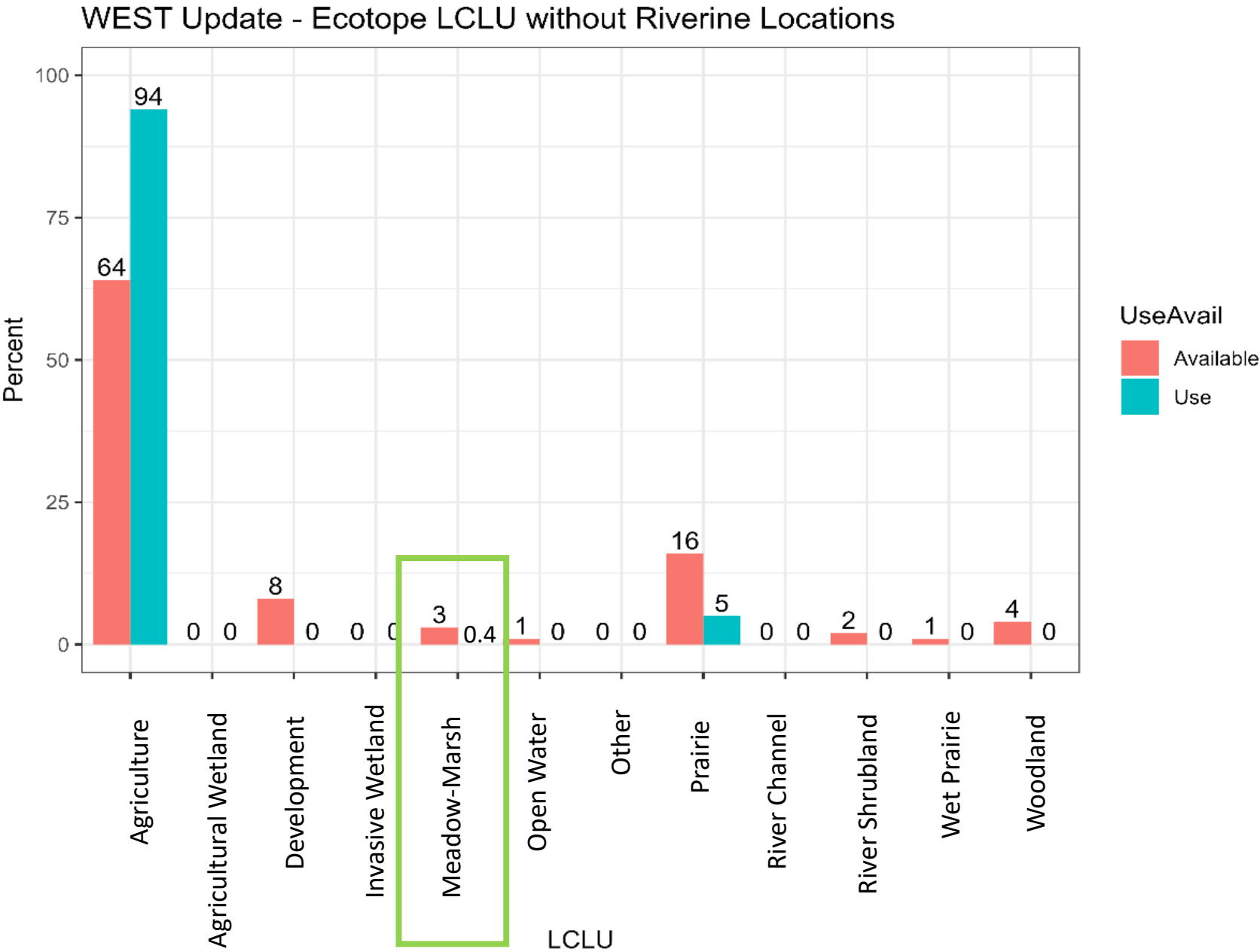
WEST Redo: without Riverine Use Locations (Using Original Landcover)



WEST Redo: without Riverine Use Locations, Using the Ecotope Landcover



WEST Redo: without Riverine Use Locations, Using the Ecotope Landcover



Collaboration – Bringing Methods Closer Together

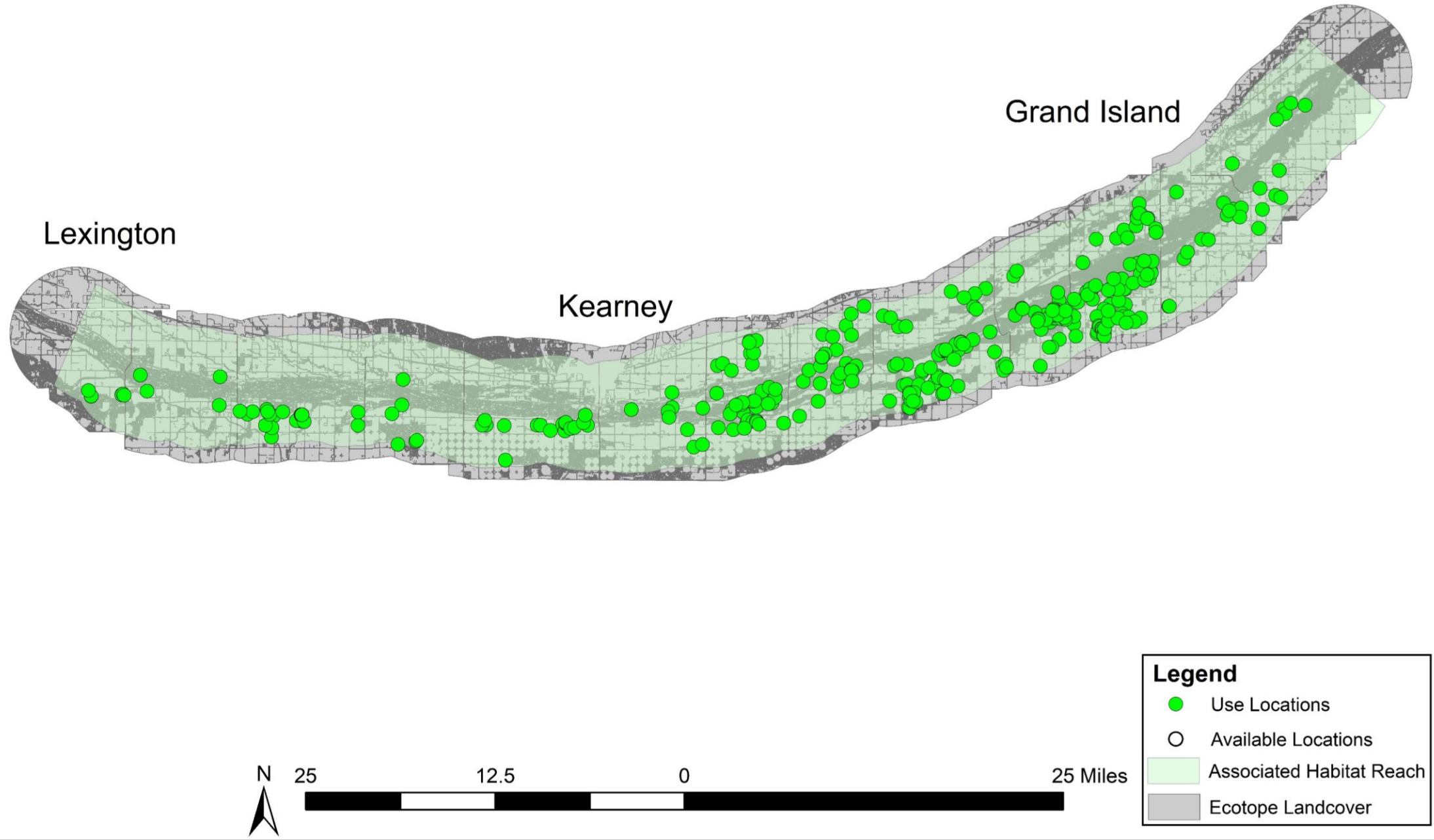
WEST Analysis Update

- 1 - with the Ecotope landcover.
- 2 - without riverine locations (original analysis landcover).
- 3 - without riverine locations using Ecotope landcover.

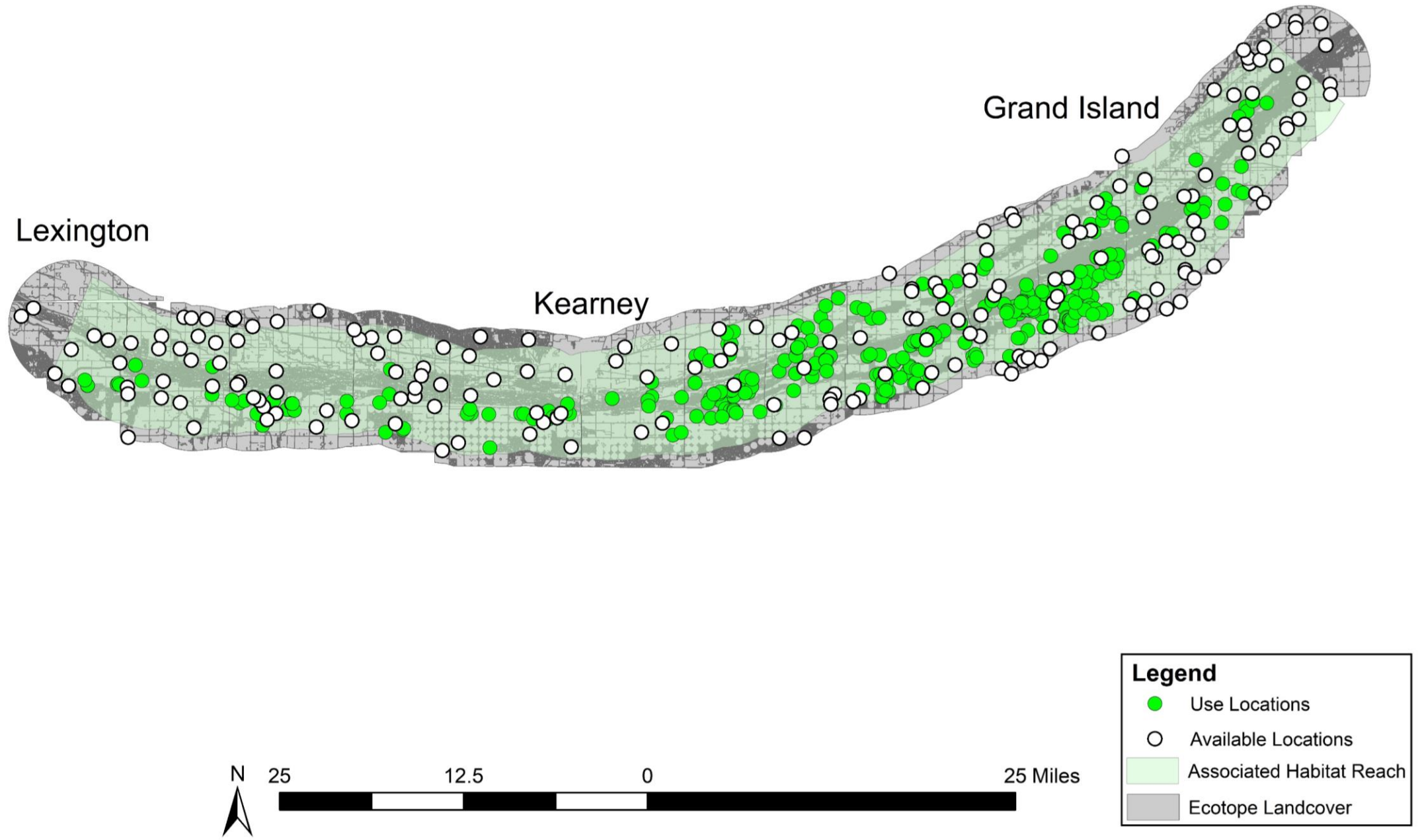
Ecotope Analysis Update

- 4 - with constrained available locations

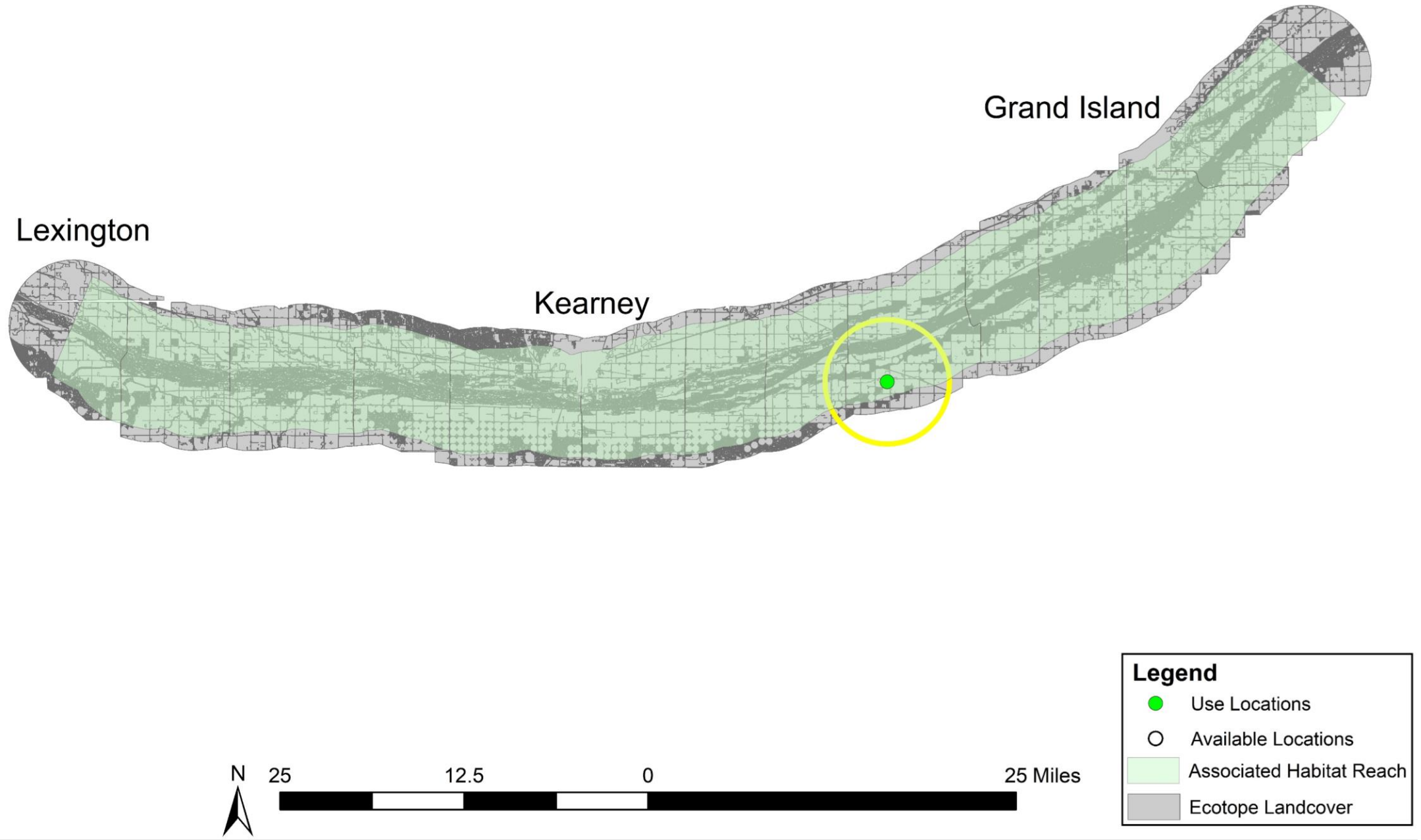
Ecotope – Original Methods



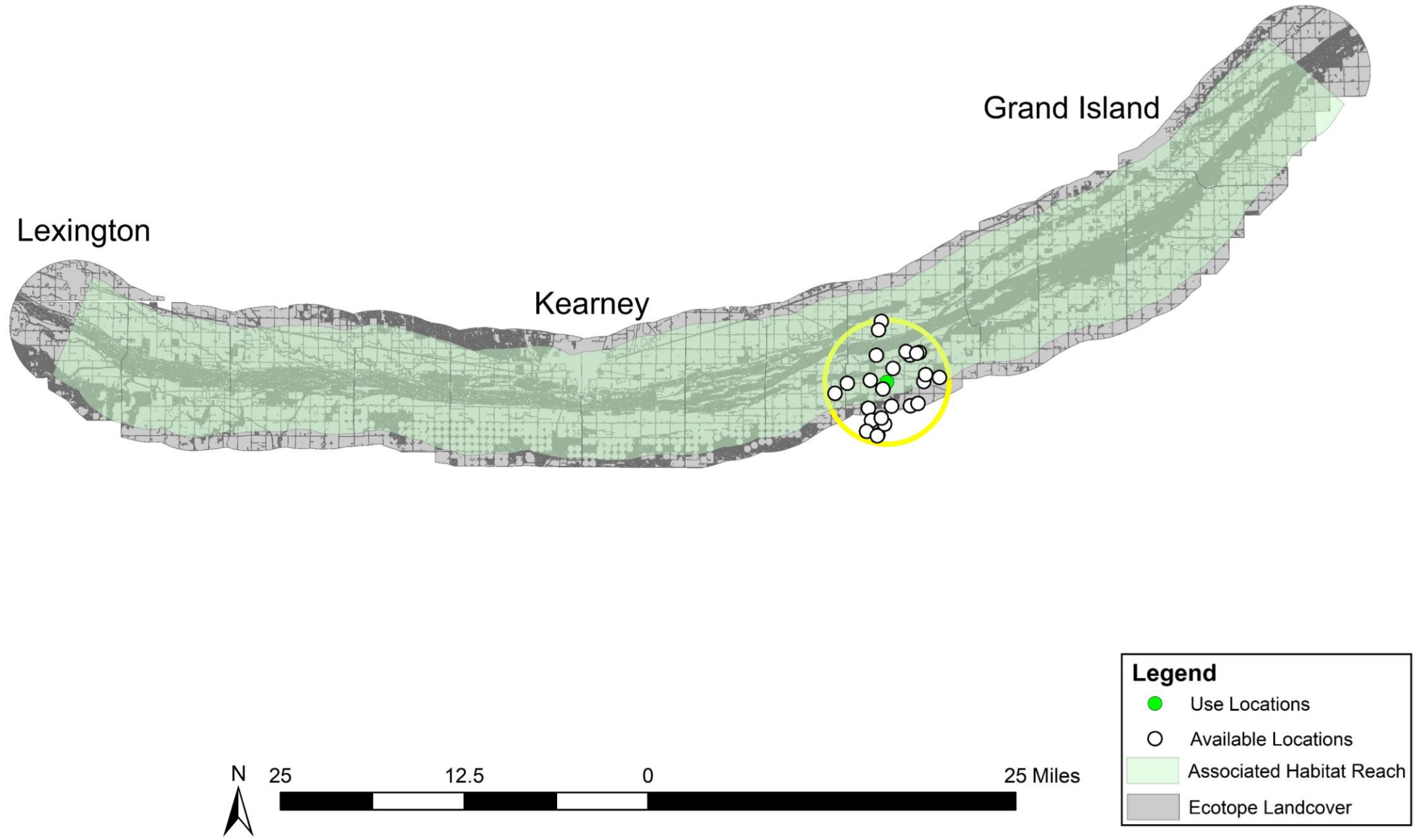
Ecotope – Original Methods



Ecotope Redo: with Constrained Available Locations

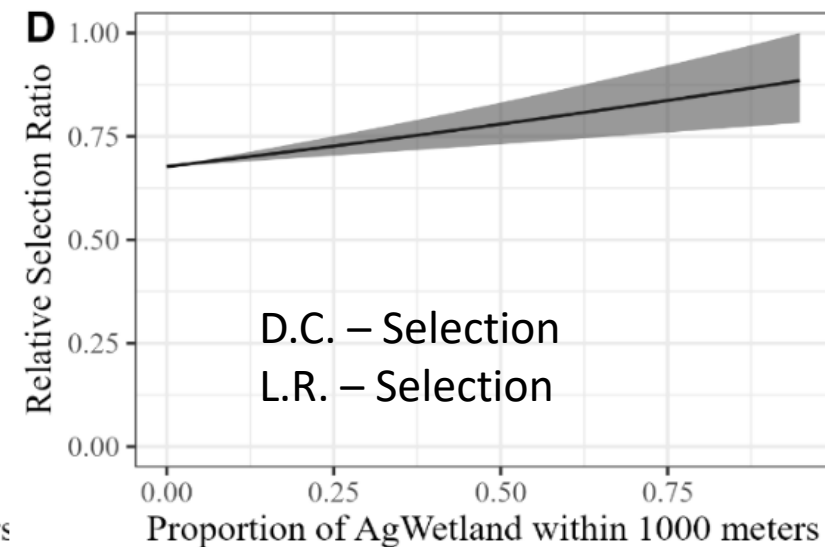
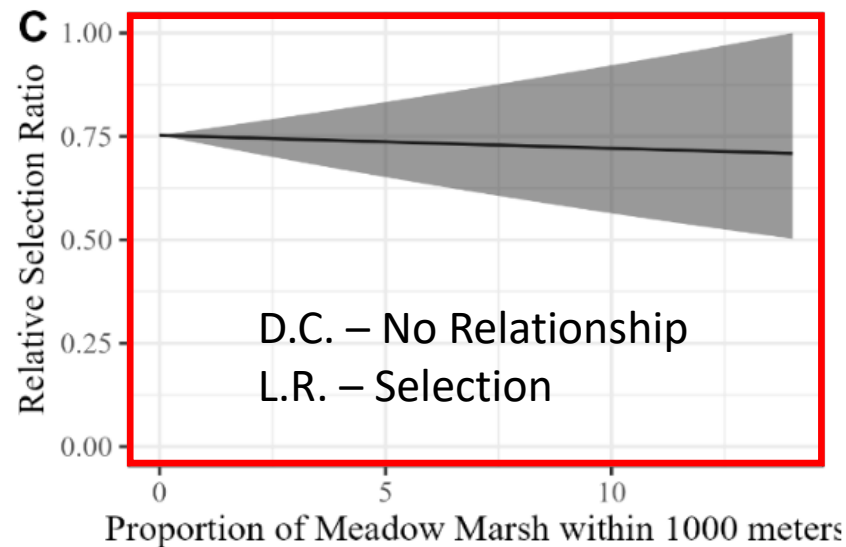
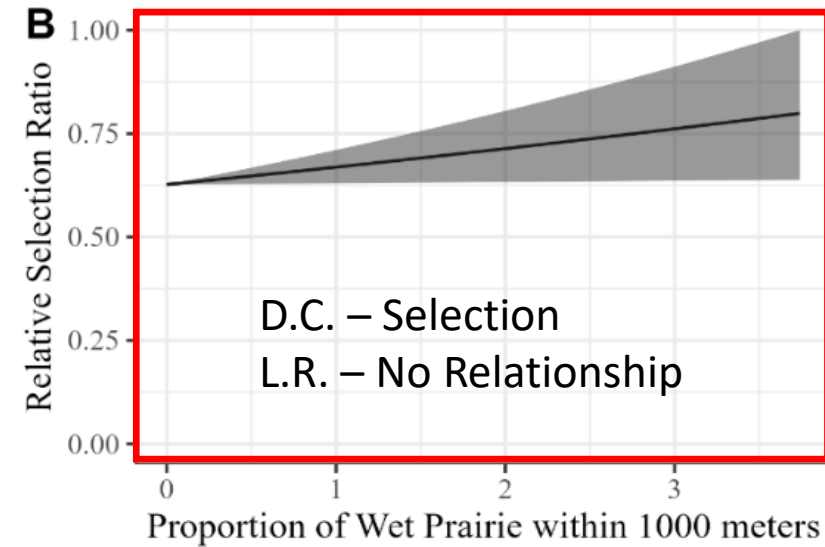
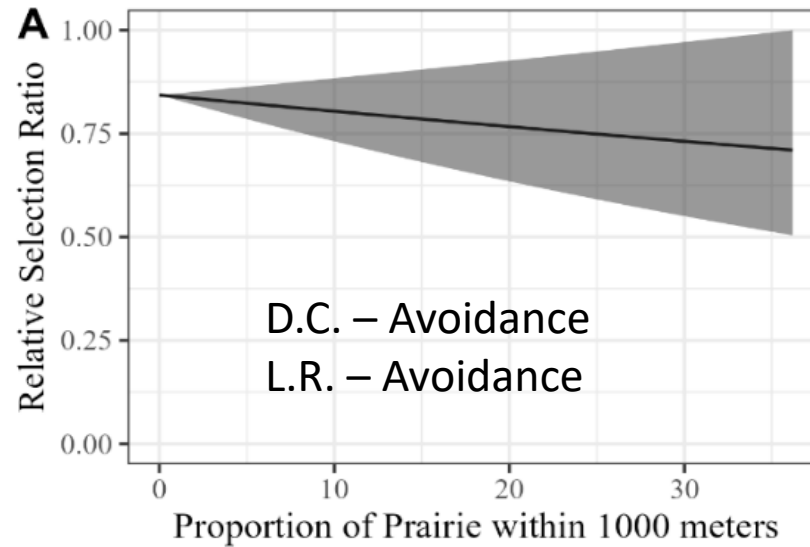


Ecotope Redo: with Constrained Available Locations



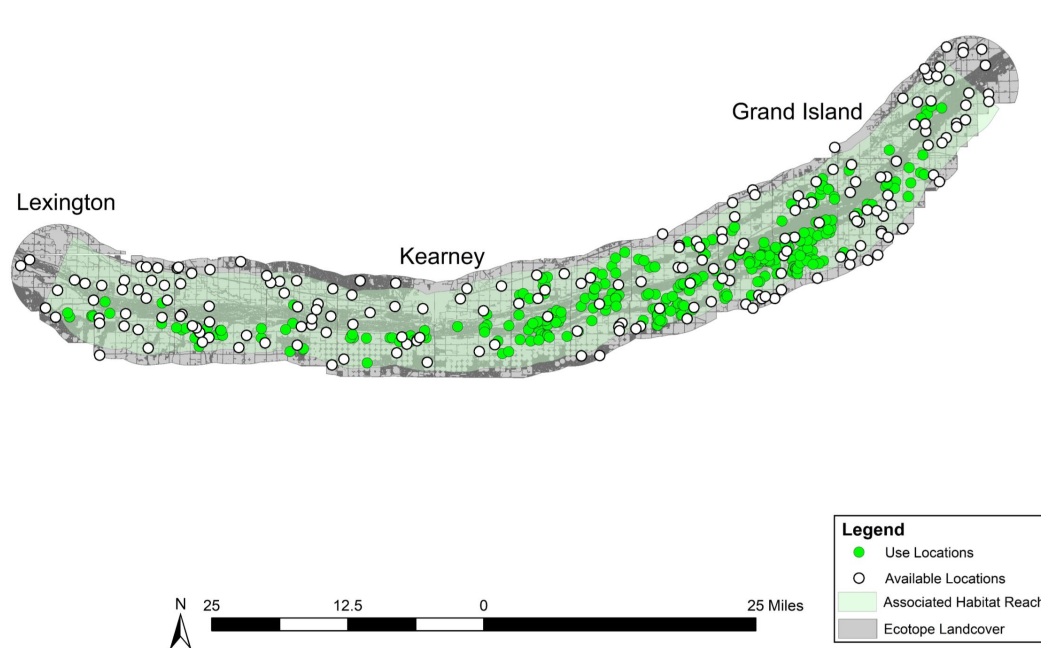
Ecotope Redo: Results

Ecotope Update – Restricted Availability



Conclusion

- Comparing use locations to *available locations nearby (WEST), rather than throughout the AHR (Ecotope)*, resulted in divergent conclusions about the selection of wet meadows for whooping cranes.



VS.

